

New York Governor  
George E. Pataki  
New York City Mayor  
Michael R. Bloomberg  
LMDC President  
Stefan Pryor

LMDC Board of Directors  
John C. Whitehead, Chairman  
Lawrence T. Babbio, Jr.  
Robert P. Balachandran  
Amanda M. Burden  
Daniel L. Doctoroff  
Robert Douglass  
Charles A. Gargano  
Robert M. Harding  
Thomas S. Johnson  
James K. Kallstrom  
Edward J. Malloy  
William C. Rudin  
Martha E. Stark  
Carl Weisbrod  
Madelyn Wils

Upcoming Board Meetings  
May 11, 2006  
June 7, 2006  
July 13, 2006  
August 10, 2006  
September 7, 2006  
October 12, 2006  
November 9, 2006  
December 7, 2006

**LMDC**  
Rebuild. Renew.  
Lower Manhattan  
Development Corporation  
One Liberty Plaza  
20th Floor  
New York, NY 10006  
T: 212-962-2300  
F: 212-962-2431  
TTY: 212-962-0045  
www.RenewNYC.com



Left to right: Dance New Amsterdam; Church Street School for Music & Art; HT Dance Company (Photo: Carol Rosegg for HT Chen & Dancers); City Lore Center for Art, Tradition & Cultural Heritage (Photo: Center for Traditional Music & Dance); New York City Police Museum; National Parks of New York Harbor Conservancy/Federal Hall; The Flea Theater; Manhattan Youth Recreation & Resources; New Museum of Contemporary Art (Design & Visualization; Sejima + Nishizawa/SANAA); Judd Foundation (Judd artwork ©Judd Foundation. Licensed by Vaga NYC, 2006. Photo: Rainer Judd); Museum of American Finance; New York Classical Theatre; StoryCorps.

## GOVERNOR AND MAYOR

### LMDC Awards Over \$27 Million for Culture in Lower Manhattan

Governor George E. Pataki and Mayor Michael Bloomberg recently announced that the Lower Manhattan Development Corporation (LMDC) will award \$27.4 million in cultural enhancement grants to 63 Lower Manhattan arts organizations and projects. The grants are expected to leverage more than \$410 million in investments for cultural institutions below Houston Street. The LMDC Board of Directors approved a plan for the grants, which range from \$20,000 to \$2 million, at its meeting on Thursday, March 9, 2006. In November 2005, the Board adopted guidelines for cultural enhancement funds. The Board also previously allocated up to \$10 million for a new home for the *Dnauing Center*.

Governor George E. Pataki said, "The commitment of nearly \$30 million in funding will go a long way towards ensuring that Lower Manhattan will not only be known as the world's financial capital, but as a landmark cultural destination. These new grants will bring a diverse and broad range of cultural programming downtown continuing Lower Manhattan's transformation into a 24/7 community. These institutions will serve to unite the local community, to educate, inform, and inspire visitors, as well as animate and redefine the neighborhood."

Mayor Michael R. Bloomberg said, "These organizations represent the energy, diversity, and excellence of New York City's non-profit cultural community, which is the backbone of our tourism industry and a magnet for students, businesses and new residents. By strengthening organizations over time, allowing projects to move faster, and attracting new cultural programs to the area, we are helping to reinforce and expand Lower Manhattan's identity as an exciting cultural center for artists and audiences from here and around the world."

Funding allocations are based on criteria established by the LMDC Board, which include: ability of the proposed project to spur long-term Lower Manhattan revitalization; programmatic excellence; capacity to leverage additional invest-

ments in culture in Lower Manhattan; organizational and fiscal viability; and durability as an investment. The proposed grants will be used for new construction, renovations, project planning, events and programming. Grant recipients include museums, theaters, dance and music performance venues and community organizations.

*"I appreciate the Panel's thorough work in making recommendations to award grants to these sixty-three outstanding institutions."*

— Chairman John C. Whitehead

LMDC Chairman John Whitehead said, "I appreciate the Panel's thorough work in making recommendations to award grants to these sixty-three outstanding institutions, all of which are committed to furthering Lower Manhattan's reputation as a place where cultural richness and diversity thrive."

LMDC President Stefan Pryor said, "This announcement demonstrates a continued commitment by Governor Pataki and Mayor Bloomberg to the future of the arts and culture in Lower Manhattan."

The announcement is the result of a diligent and thoughtful application review process conducted by a Cultural Enhancement Fund Advisory Panel, which the LMDC Board authorized to make recommendations regarding the applications. Its November board meeting. Cultural Enhancement Funds are made possible by a federal Community Development Block Grant (CDBG) administered by the United States Department of Housing and Urban Development (HUD).

For additional information on each of the arts and cultural organizations that will receive funding, please visit the interactive cultural enhancement fund map and view the press release located on the LMDC's website: [www.RenewNYC.com](http://www.RenewNYC.com).

## COMMUNITY NEWS

### Deconstruction and Cleanup of 130 Liberty Street Continues

In mid-March, the Lower Manhattan Development Corporation announced the completion of the exterior scaffolding and the start of abatement of 130 Liberty Street, as well as the installation of the tower crane. This will allow for physical floor by floor deconstruction to begin in June. The building is expected to be deconstructed by spring of 2007.

LMDC President Stefan Pryor said, "We've worked closely with the community and federal, state and local regulatory agencies to ensure this process is carried out in a safe and effective manner."

General contractor Bovis Lend Lease has hired John Galt Corporation as the abatement and deconstruction subcontractor. Required notifications for the abatement have been submitted to the New York State Department of Labor, New York City Department of Environmental Protection, and the United States Environmental Protection Agency.

LMDC acquired 130 Liberty Street, the former Deutsche Bank Building, in 2004 and hired environmental consultants to conduct environmental testing and characterization of the building. The results of these tests are public, and a daily exterior air monitoring program was implemented by the LMDC to protect the surrounding neighborhood throughout the deconstruction process. This program includes 12 air monitors in and around the site to measure the environmental impact at all stages of the project. There are also on-site safety managers and an LMDC representative at the site.

#### Community Preparedness

The Lower Manhattan Development Corporation announced in December that it would provide \$47,896 to the New York City Office of Emergency Management (OEM) to enhance community preparedness in the area of 130 Liberty Street. Since this announcement, The Battery Park City/Downtown Community Emergency Response Team (CERT) has already trained 50 new



Scaffolding on the exterior of 130 Liberty Street.

members with the funding provided by the LMDC.

The expanded CERT has been working throughout the neighborhood to educate the community about the project and provide information on how to respond in the event of an emergency. Working with OEM, the CERT will continue to recruit workers and residents in the area of 130 Liberty Street to become members and will provide in-depth training, including first aid and first responder assistance, and information about OEM's Ready New York program. Buildings in the 130 Liberty Street area that do not have a CERT team member can register a building representative with the CERT. For additional information, to sign up for training, or to register a building representative with CERT, send an email to [bpccert@aol.com](mailto:bpccert@aol.com). In the event of an emergency, the CERT communications will supplement, not replace, emergency responders' communications.

A 24-hour public hotline (347-234-4418) is available and updated information can be found on the LMDC's website at [www.RenewNYC.com](http://www.RenewNYC.com) and [www.LowerManhattan.info/construction](http://www.LowerManhattan.info/construction).



View from inside the Visitor Orientation & Education Center overlooking the Memorial Plaza.

## STATE FUNDING

### Budget Will Include \$80 Million for Snohetta Building

Governor George E. Pataki has earmarked \$80 million in the 2006-07 State Budget for the Snohetta-designed building located on the memorial quadrant that will serve as a landmark to welcome visitors to the World Trade Center site. The programming in the building will complement the Memorial and Memorial Museum and will be devoted to honoring the victims and heroes

*"The Snohetta designed building will complement the memorial complex, be a powerful tribute and will fulfill our solemn obligation to the families of the heroes, friends, neighbors, and loved ones we lost."* — Governor George E. Pataki

of the attacks of September 11, 2001 and February 26, 1993. The building will also house exhibition space related to the events of September 11, 2001 and February 26, 1993.

"The World Trade Center Memorial has always been, and will always be, the centerpiece, heart, and soul of all our rebuilding efforts," Governor Pataki said. "The Snohetta designed building will complement the memorial complex, will be a powerful tribute and will fulfill our solemn obligation to the families of the heroes, friends, neighbors, and loved ones we lost, and create a unified and unforgettable visitor experience to honor their memory."

#### April 2003

LMDC announces start of International Competition to design World Trade Center Site Memorial



#### July 2003

LMDC announces final number of submissions for the Memorial Competition



#### Nov. 2003

LMDC opens an exhibit of eight Memorial competition finalists



#### Jan. 2004

Memorial Competition Jury Announces Winning Design Architect Michael Arad and Landscape Architect Peter Walker unveil Memorial design



#### April 2004

LMDC selects Associate Architect for Memorial, Davis Brody Bond

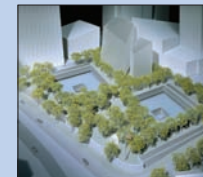


#### Dec. 2004

Memorial Foundation Board of Directors is announced



New details of the World Trade Center Memorial unveiled



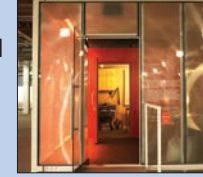
#### May 2005

LMDC allocates \$300 million for the Memorial and Cultural Complex at the WTC site



#### June 2005

Construction on two new interim Memorial projects announced: StoryCorps and the Tribute Center



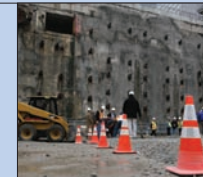
#### Sept. 2005

Trees tagged for inclusion in the Memorial



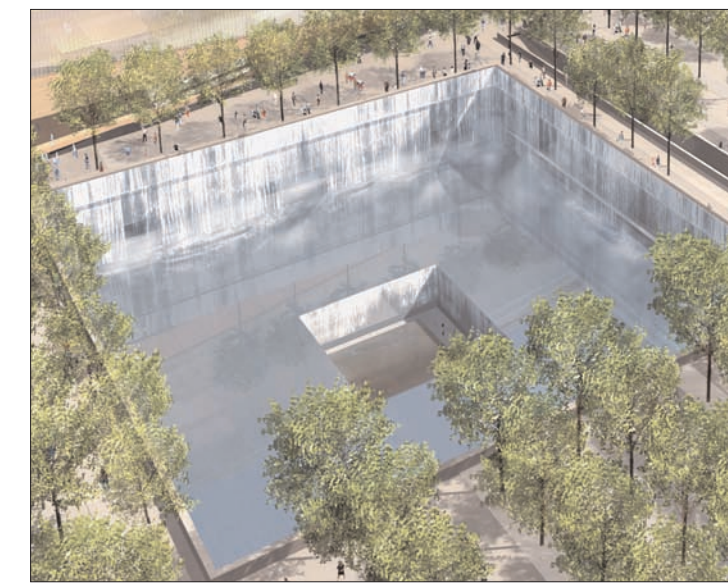
#### March 2006

Memorial construction begins



#### Sept. 2009

Memorial opens to the public



Reflecting Absence, designed by Michael Arad and Peter Walker.

## WORLD TRADE CENTER SITE World Trade Center Memorial

After four years of public planning, the LMDC and the WTC Memorial Foundation reached a major milestone in the month of March -- the start of construction on the WTC Memorial, the centerpiece of redevelopment in Lower Manhattan.

The initial stage of construction on the Memorial and Museum at the WTC site began on March 13, 2006, in the form of site preparation and protection. This stage of construction will take approximately 4-8 weeks and will include engineering and surveying work; delivery of construction materials; as well as protection of the box beam columns of the original Twin Towers. Work on the footings and foundation will soon begin.

#### Reflecting Absence

*Reflecting Absence*, designed by Michael Arad and Peter Walker, will forever honor the 2,979 individuals lost in the terrorist attacks of September 11, 2001 and February 26, 1993. The Memorial will consist of twin voids that reside in the original footprints of the Twin Towers and will contain waterfalls that flow nearly thirty feet into reflecting pools below. The names of all of those lost on September 11, 2001 and February 26, 1993 can be viewed while water cascades behind them on the second memorial level.

This thoughtfully designed memorial will be part of the six-acre landscaped plaza featuring a large ceremonial one-and-a-half acre clearing that will serve as a gathering place for events of remembrance.

On the lowest level, history will be preserved. The very foundations of the World Trade Center -- the original box beam column remnants -- can be accessed and a contemplation room will provide a space for the remains of those lost and never identified with an adjacent area offering a sacred space for victims' families.

*Reflecting Absence* was selected from 5,201 entrants from 63 nations and 49 states by a 13-member memorial jury and was announced on January 6, 2004. The Memorial, scheduled to open on September 11, 2009, will ensure that future generations know where the towers once stood and that each individual life taken during those tragic days will never be forgotten.

For additional information visit [www.RenewNYC.com](http://www.RenewNYC.com) or [www.wtcmemorialfoundation.org](http://www.wtcmemorialfoundation.org).

## TREE TAGGING

### Trees Tagged for Memorial Grove at WTC Site

The Sweet Gum trees tagged in Eastport, New York will be a part of the *Memorial Grove* of trees on the more than six-acre plaza of the *WTC Memorial*. Additional Oak and Sweet Gum trees will come from locations in Pennsylvania, Washington DC and other areas of the east coast. They will continue to grow and be shaped, maintained and monitored. All of the trees for the plaza will be then moved to a central growing area with a similar climate to New York City. In the Fall of 2008 and the Spring of 2009, the trees will then be moved to the *World Trade Center* and installed onto the plaza. By the opening of the Memorial in 2009, the trees are expected to be 30-35 feet tall. In total there will be approximately 406 trees planted on the WTC site.



LMDC funds were used to renovate athletic fields at Sara D. Roosevelt Park and provide landscape renovations at Washington Market.

## PARKS FUNDING

# LMDC Approves \$20 Million for Parks & Open Spaces

Governor George E. Pataki and Mayor Michael R. Bloomberg announced that the Lower Manhattan Development Corporation's Board of Directors authorized an additional \$19.5 million at the February board meeting (\$500,000 was approved in August) to renovate, improve or create six Lower Manhattan parks and open spaces. This is in addition to more than \$100 million that the joint State/City agency has previously approved, including \$70 million in funding for the expansion of Hudson River Park.

"The announcement of these six new projects is the latest example of our unprecedented \$120 million commitment to create and revitalize parks, playgrounds and green spaces, and will go a long-way towards the continued transformation of Lower Manhattan." Governor George E. Pataki said.

"The renewal and development of park space is a vital part of the revitalization of Lower Manhattan," said Mayor Michael R. Bloomberg. "New York City Parks have never been healthier or more robust, and this infusion of funding will make sure that we continue to improve open spaces across Lower Manhattan."

The following is the scope of work that will occur at each of the six park sites with this round of LMDC funding:

### James Madison

LMDC Funds will transform this triangular parking lot into a passive garden-like sitting area for use by office workers and local residents.

### Canal Varick Light

With LMDC funding, this project will create a

*"The renewal and development of park space is a vital part of the revitalization of Lower Manhattan."*

— Mayor Michael R. Bloomberg

new lush park as a gateway to New York City and Lower Manhattan. Just under one-half acre, the interior of the site will be paved with hex block, bluestone and granite cobbles. New street trees and canopy trees will also be contained in three large ornamental planting beds.

### Sara D Roosevelt, Phase II

After LMDC funds allowed for the renovation of the athletic fields at the park (opened in Fall 2005), this next phase will include the reconstruction of the playground, including new play equipment, a spray shower, benches, drinking fountain and lighting.

### Pike/Allen St. Malls

LMDC funding will reconstruct eight center plots along Allen Street and seven center plots along Pike Street as areas with plantings and paths, including new pavements and curbs, fencing and gates, bollards, benches, lighting, trees, and ground cover, and water supply.

### Collect Pond Park

LMDC funding will reconstruct existing site and expand the park to its proper property line along the southern portion as a passive park with planting, benches, paths and park lighting.

### Washington Market, Phase II

Landscape renovations at Washington Market Park were included in LMDC's first round of parks funding. The purpose of "Phase 2" at this park is to provide a new building of approximately 900 square feet to house a comfort station.

## News Briefs

### LMDC BOARD APPROVES \$150 MILLION FOR TWO EAST RIVER WATERFRONT PROJECTS

On March 9th the LMDC Board approved \$150 million for two East River Waterfront projects. Approximately \$140 million will support the design, renovation and proposed expansion of the East River Esplanade.

Ten million will be used to beautify and improve the central space of Peck Slip with a design that will be complementary to the South Street Seaport Historic District. Additionally, the project will include streetscape enhancements - including benches, lighting, new paving, trees and landscaping - for Catherine, Rutgers, and Montgomery slips. The project will improve the connection between the Lower Manhattan waterfront and the East River Park by widening pedestrian and bike paths and creating planted berms to separate recreation space from the FDR Drive.

### TRIBUTE CENTER WALKING TOURS

The Tribute Center is a project of the September 11th Widows and Victims' Families' Association. The Association was formed in November 2001 to provide



Rendering of the East River Esplanade at night.



Rendering of a revitalized Fulton Street Corridor to be created with LMDC funds.

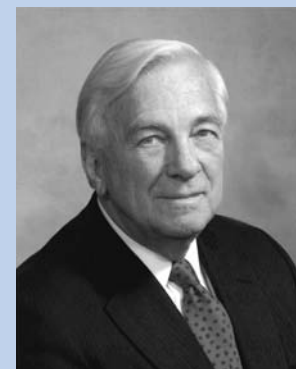
resources and information for those most directly affected by the attacks on the World Trade Center.

In November 2005, *The Tribute Center* began daily public tours around the perimeter of the World Trade Center Site. The tours are led by people who lost loved ones, survivors of the attacks, rescue workers, police, firefighters, volunteers and Lower Manhattan residents and workers. The guide provides an overview of what happened at the site on February 26, 1993 and September 11, 2001 and gives visitors the opportunity to hear the guide's personal experiences. For information and reservations see [www.telecharge.com](http://www.telecharge.com) under "Other Events."

### REVITALIZATION OF FULTON STREET CORRIDOR

The LMDC Board authorized \$38 million in funding for the City to revitalize the Fulton Street corridor. The project proposes to redevelop Fulton Street and the surrounding area into a mixed-use retail corridor serving the surrounding commercial and residential sectors as well as the growing visitor market. This will be completed through public investments in five targeted areas including: enhancement of existing open spaces; creation of new open spaces; establishment of retail and façade improvement programs; and streetscape and sidewalk improvements.

## Letter from the Chairman



Bank building at 130 Liberty Street. Both projects are the culmination of years of planning and public input.

Together with the support of Governor Pataki and Mayor Bloomberg, we are proud to announce all of the progress that has been made. It is gratifying and humbling to see workers at the site every day, moving toward the creation of the magnificent memorial for its opening in September of 2009.

In addition to the WTC site, I would also like to call your attention to progress being made throughout Lower Manhattan. Since the creation of the LMDC in November of 2001, we have worked with the local community, businesses, and government leaders to revitalize downtown and create a thriving community for people to live, work, and raise families.

In the past few months, the LMDC has made substantial investments in parks and green spaces to ensure that people living in or visiting Lower Manhattan have beautiful spaces to enjoy an afternoon picnic or a competitive game of soccer. The LMDC Board recently authorized the investment of \$150 million for the East River Waterfront. This funding supports a tremendous renovation of the esplanade and piers, along with the renovation

In March, the LMDC reached two major milestones in the revitalization of Lower Manhattan - the start of construction on the World Trade Center Memorial, and the beginning of abatement work at the Deutsche

of additional public spaces in Peck, Catherine, Rutgers and Montgomery slips. Following on the success of the first 13 parks completed with LMDC funds, at the February Board meeting we also authorized an additional \$20 million for the renovation, improvement, and creation of six more Lower Manhattan parks and open spaces. With all of these improvements combined with our \$70 million commitment to Hudson River Park on the west side, we are ensuring that Lower Manhattan will be filled with and surrounded by magnificent open spaces.

To ensure that arts and culture flourish in Lower Manhattan, we announced in March that LMDC had awarded \$27.4 million in cultural enhancement grants to 63 Lower Manhattan arts organizations and projects, covering every art form. These funds will offer an infusion of innovative arts opportunities for the residents of Lower Manhattan, New Yorkers, and visitors from around the nation and the world. The energy the arts bring to Lower Manhattan is crucial to both our cultural and economic vitality, and we are proud the LMDC is able to play a role in the creation of a constellation of culture downtown.

This edition of the LMDC newsletter will provide you with insight into all of the exciting projects we are working on in Lower Manhattan. The newsletter also highlights the significant progress that the LMDC, in partnership with the community, the State, and the City, has already achieved in Lower Manhattan.

*John C. Whitehead*

John C. Whitehead, Chairman  
Lower Manhattan Development Corporation



Rendering of the Port Authority WTC Transportation Hub designed by Santiago Calatrava.

## TRANSPORTATION

# World Trade Center Transportation Hub

In early September 2005, Governor George E. Pataki, U.S. Transportation Secretary Norman Y. Mineta, Acting New Jersey Governor Richard J. Codey and Mayor Michael R. Bloomberg announced the commencement of construction of the *World Trade Center Transportation Hub*. This Port Authority project will link the PATH rapid-transit system with all downtown subway lines and the World Financial Center Ferry terminal via a West Street underpass.

The full-service hub will also accommodate future rail service to JFK International Airport and Long Island. The design, by world-renowned architect Santiago Calatrava, was inspired by the idea of a child releasing a bird. The hub will be operational in 2009 and will eventually serve more than 80,000 PATH riders daily.

### Fulton Street Transit Center

The first phase of construction on the Fulton Street Transit Center began on August 30, 2005, with the start of work on the Dey Street Concourse. When completed, the user-friendly station will ease customer crowding, reduce travel time and provide underground

connections linking 11 existing subway lines to PATH and ferry services.

Specific elements include the renovation of the Fulton Street 2/3 and 4/5 subway stations; the creation of new ADA street entries to the transit complex; and the construction of a new transit center entry building. The project will also incorporate the restored historic Corbin Building into the Center, a feature that will create a dramatic and dignified entrance to the subways on John Street.

The 2/3 and southern portions of the 4/5 station rehab are expected to be completed in 2006, and the Dey Street concourse will be open to the public in 2007. When fully completed in 2008, the Fulton Street Transit Center will provide improved light, air and improved access for the over 275,000 riders who use the Fulton Street 2/3, 4/5, A/C and J/M/Z station complex every day. As it exists today, the complex is the busiest in Lower Manhattan and the number of daily riders is expected to swell as the World Trade Center site takes shape.

## EXPLORE CHINATOWN

# LMDC & Chinatown Partnership Local Development Corp. Announce Clean Streets Campaign

The LMDC, *Chinatown Partnership Local Development Corporation* (CPLDC), and *The September 11th Fund* joined community and business leaders to launch the first phase of an ambitious four-year campaign to improve and maintain sanitary conditions in the Chinatown community. The launch involved the placement of 48 state-of-the-art, high-volume refuse containers throughout the Chinatown neighborhood.

"The LMDC is pleased to continue our support of Chinatown and the CPLDC through \$5.4 million in funding for the 'Clean Streets' program. The CPLDC continues to work vigorously to improve the quality of life in Chinatown through innovative programs that combine public and private resources," said Stefan Pryor, President, *Lower Manhattan Development Corporation*. "We look forward to the implementation of the 'Clean Streets' program."

The new, high-end receptacles are part of a larger effort to encourage pedestrians to dispose of their litter properly, as well as provide a means to contain refuse and



Stefan Pryor, Wellington Chen, Scott Stringer, Gao An Lin, and Zhen Sheng Zhu.

*"The LMDC is pleased to continue our support of Chinatown and the CPLDC through \$5.4 million in funding for the Clean Streets program."*

— Stefan Pryor, LMDC President

prevent it from spilling onto the streets through its effective design and quality. The focus on sanitary conditions stems from the results of a major survey of more than 3,000 Chinatown residents and businesses following 9/11, which indicated that improving cleanliness, reducing odors and removing graffiti is a top priority for the neighborhood's livelihood. The campaign builds on and incorporates the efforts of the *Council for a Cleaner Chinatown*, a non-profit community group founded over ten years ago.

## LOWER MANHATTAN

# Kids Passport Program

The LMDC's *Museums of Lower Manhattan* -- a promotional campaign -- recently announced its new *Kids Passport Program*. This program is designed to spark interested in exploring the many exciting exhibits the museums offer. There's always an adventure in store for kids at the *Museums of Lower Manhattan*. Every day of the week you'll find one or more of the museums offering arts and crafts, movies and live performances, fun tours of places like ships, and lots of interesting exhibits to visit.

To make visits more exciting - and give kids a record of their adventures - the *Museums of Lower Manhattan* created a special passport, which is available at 10 participating museums. Every time they visit one of the museums, the booklet will be stamped and dated, just like a real passport. Once a child has collected stamps from three or more museums, their adventures will be rewarded with a free *Museums of Lower Manhattan* T-shirt. All they need to do is show their completed passport at the ticket desk of any participating museum to claim a T-shirt.



### Participating Museums:

*The Skyscraper Museum*  
*National Museum of the American Indian*  
*Smithsonian Institution*  
*South Street Seaport Museum*  
*Museum of Chinese in the Americas*  
*Museum of American Finance*  
*New York City Police Museum*  
*Eldridge Street Project*  
*Museum of Jewish Heritage - A Living Memorial to the Holocaust*  
*New York City Fire Museum*  
*Fraunces Tavern Museum*

This program is funded through a grant from the *Department of Housing and Urban Development*.