

REVISIONS	
NO.	DATE
A	10-28-71
B	11-10-71
C	11-10-71
D	11-10-71
E	11-10-71
F	11-10-71
G	11-10-71
H	11-10-71
I	11-10-71
J	11-10-71
K	11-10-71
L	11-10-71
M	11-10-71
N	11-10-71
O	11-10-71
P	11-10-71
Q	11-10-71
R	11-10-71
S	11-10-71
T	11-10-71
U	11-10-71
V	11-10-71
W	11-10-71
X	11-10-71
Y	11-10-71
Z	11-10-71

NO.	DATE	DESCRIPTION
1	10-28-71	ISSUED FOR PERMITS
2	11-10-71	REVISED PERMITS
3	11-10-71	REVISED PERMITS
4	11-10-71	REVISED PERMITS
5	11-10-71	REVISED PERMITS
6	11-10-71	REVISED PERMITS
7	11-10-71	REVISED PERMITS
8	11-10-71	REVISED PERMITS
9	11-10-71	REVISED PERMITS
10	11-10-71	REVISED PERMITS
11	11-10-71	REVISED PERMITS
12	11-10-71	REVISED PERMITS
13	11-10-71	REVISED PERMITS
14	11-10-71	REVISED PERMITS
15	11-10-71	REVISED PERMITS
16	11-10-71	REVISED PERMITS
17	11-10-71	REVISED PERMITS
18	11-10-71	REVISED PERMITS
19	11-10-71	REVISED PERMITS
20	11-10-71	REVISED PERMITS
21	11-10-71	REVISED PERMITS
22	11-10-71	REVISED PERMITS
23	11-10-71	REVISED PERMITS
24	11-10-71	REVISED PERMITS
25	11-10-71	REVISED PERMITS
26	11-10-71	REVISED PERMITS
27	11-10-71	REVISED PERMITS
28	11-10-71	REVISED PERMITS
29	11-10-71	REVISED PERMITS
30	11-10-71	REVISED PERMITS

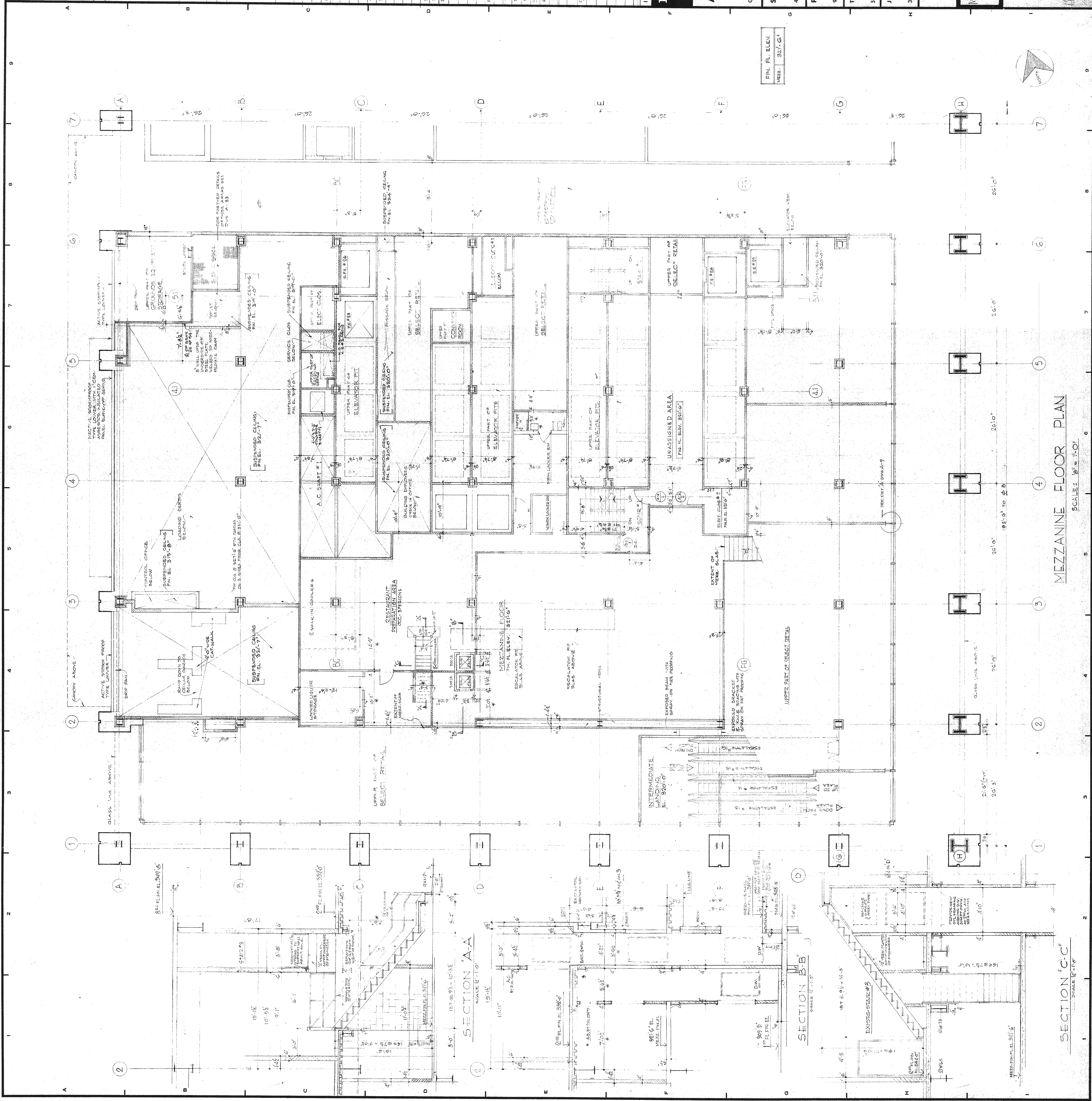
BANKERS TRUST PLAZA

A FISHER BROTHERS PROJECT

GREENWICH AND LIBERTY ST. N. Y. N. Y.
 SHREVE, LAMB & HARMON ASSOCIATES P.C.
 ARCHITECTS
 475 PARK AVENUE SOUTH N. Y. N. Y. 10016
 PETERSON AND BRICKBAUER ASSOCIATED ARCHITECTS
 919 THIRD AVENUE N. Y. N. Y. 10022
 THE OFFICE OF JAMES RUDERMAN STRUCTURAL ENGINEERS
 315 MADISON AVENUE N. Y. N. Y. 10017
 J. A. ROSS, BAUM & BOLLES MECH. & ELEC. ENGINEERS
 345 PARK AVENUE N. Y. N. Y. 10022

MEZZ. FL. PLAN-CONSTRUCTION SOUTH (1ST TENANT)

PROJECT NUMBER 7101
 DRAWING NUMBER A9M
 DATE OCT 25 1971
 SCALE



MEZZANINE FLOOR PLAN

SCALE: 1/4" = 1'-0"