

REVISIONS	
NO.	DESCRIPTION
A	ADDED WALL AT 100' FROM SOUTH SIDE
B	ADDED WALL AT 100' FROM SOUTH SIDE
C	ADDED WALL AT 100' FROM SOUTH SIDE
D	ADDED WALL AT 100' FROM SOUTH SIDE
E	ADDED WALL AT 100' FROM SOUTH SIDE
F	ADDED WALL AT 100' FROM SOUTH SIDE
G	ADDED WALL AT 100' FROM SOUTH SIDE
H	ADDED WALL AT 100' FROM SOUTH SIDE
I	ADDED WALL AT 100' FROM SOUTH SIDE
J	ADDED WALL AT 100' FROM SOUTH SIDE
K	ADDED WALL AT 100' FROM SOUTH SIDE
L	ADDED WALL AT 100' FROM SOUTH SIDE
M	ADDED WALL AT 100' FROM SOUTH SIDE
N	ADDED WALL AT 100' FROM SOUTH SIDE
O	ADDED WALL AT 100' FROM SOUTH SIDE

BANKERS TRUST PLAZA

A FISHER BROTHERS PROJECT

GREENWICH AND LIBERTY ST. N.Y. N.Y.

SHREVE LAMB & HARMON ASSOCIATES P.C.
ARCHITECTS
475 PARK AVENUE SOUTH N.Y. N.Y. 10018

PETERSON AND BRICKBAUER ASSOCIATED ARCHITECTS
919 THIRD AVENUE N.Y. N.Y. 10022

THE OFFICE OF JAMES RUDERMAN STRUCTURAL ENGINEERS
315 MADISON AVENUE N.Y. N.Y. 10022

J. A. ROS, BAUM & BOLLE'S MECH. & ELEC. ENGINEERS
345 PARK AVENUE N.Y. N.Y. 10022

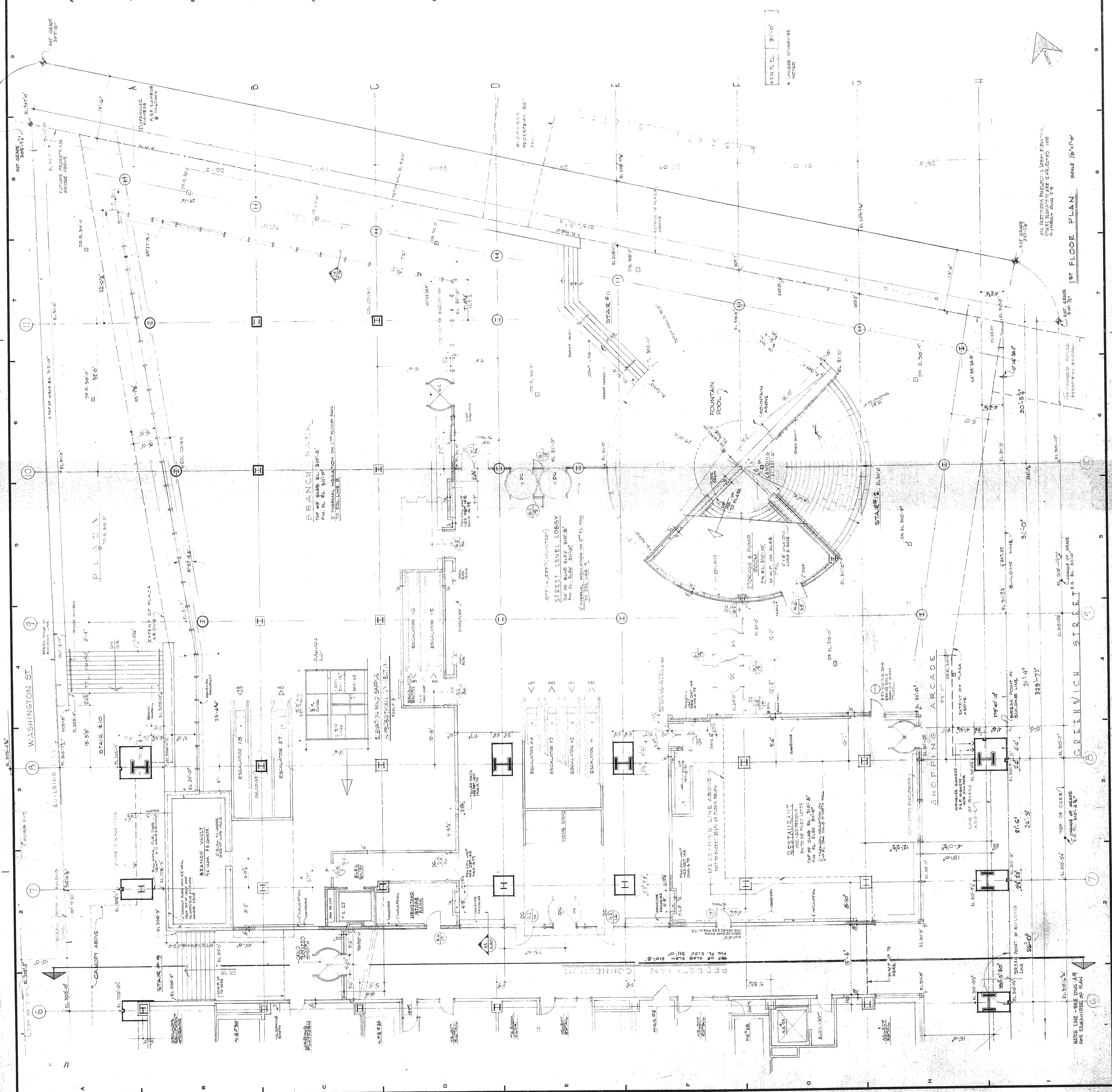
1ST FLOOR PLAN - NORTH (PTENANT)

PROJECT NUMBER 7101

DRAWING NUMBER **A10**

DATE

SCALE



TOP OF WALL - 100'-0\"/>

ALL PARTITION ENCLOSED LOBBY, STAIRS, ELEVATOR SHAFTS, AND STAIRS ARE TO BE FINISHED WITH CERAMIC TILE.

MECHANICAL LINE ABOVE NOT TO BE USED FOR HANGING LIGHTS.

RESTAURANT TO BE FINISHED WITH CERAMIC TILE.

MIRCH LINE - SEE DWG A11 FOR COORDINATE OF PLAN