

REVISIONS

NO.	DATE	DESCRIPTION
A	2-10-72	REVISED TO REFLECT CORRECTIONS MADE TO THE ORIGINAL DRAWING.
B	3-14-72	REVISED TO REFLECT CORRECTIONS MADE TO THE ORIGINAL DRAWING.
C	7-24-72	REVISED TO REFLECT CORRECTIONS MADE TO THE ORIGINAL DRAWING.
D	9-1-72	REVISED TO REFLECT CORRECTIONS MADE TO THE ORIGINAL DRAWING.
E	9-15-72	REVISED TO REFLECT CORRECTIONS MADE TO THE ORIGINAL DRAWING.
F	4-1-73	REVISED TO REFLECT CORRECTIONS MADE TO THE ORIGINAL DRAWING.
G	6-1-73	REVISED TO REFLECT CORRECTIONS MADE TO THE ORIGINAL DRAWING.

NO.	DATE	DESCRIPTION
1	2-10-72	REVISED TO REFLECT CORRECTIONS MADE TO THE ORIGINAL DRAWING.
2	3-14-72	REVISED TO REFLECT CORRECTIONS MADE TO THE ORIGINAL DRAWING.
3	7-24-72	REVISED TO REFLECT CORRECTIONS MADE TO THE ORIGINAL DRAWING.
4	9-1-72	REVISED TO REFLECT CORRECTIONS MADE TO THE ORIGINAL DRAWING.
5	9-15-72	REVISED TO REFLECT CORRECTIONS MADE TO THE ORIGINAL DRAWING.
6	4-1-73	REVISED TO REFLECT CORRECTIONS MADE TO THE ORIGINAL DRAWING.
7	6-1-73	REVISED TO REFLECT CORRECTIONS MADE TO THE ORIGINAL DRAWING.

BANKERS TRUST PLAZA

A FISHER BROTHERS PROJECT

GREENWICH AND LIBERTY ST. N. Y. N. Y.

SHREVE LAMB & HARMON ASSOCIATES P.C.
ARCHITECTS
475 PARK AVENUE SOUTH N. Y. N. Y. 10016

PETERSON AND BRICKBAUER ASSOCIATED ARCHITECTS
919 THIRD AVENUE N. Y. N. Y. 10022

THE OFFICE OF JAMES RUDERMAN
STRUCTURAL ENGINEERS
515 MADISON AVENUE N. Y. N. Y. 10022

JAROS, BAUM & BOLLES
MECH. & ELEC. ENGINEERS
345 PARK AVENUE N. Y. N. Y. 10022

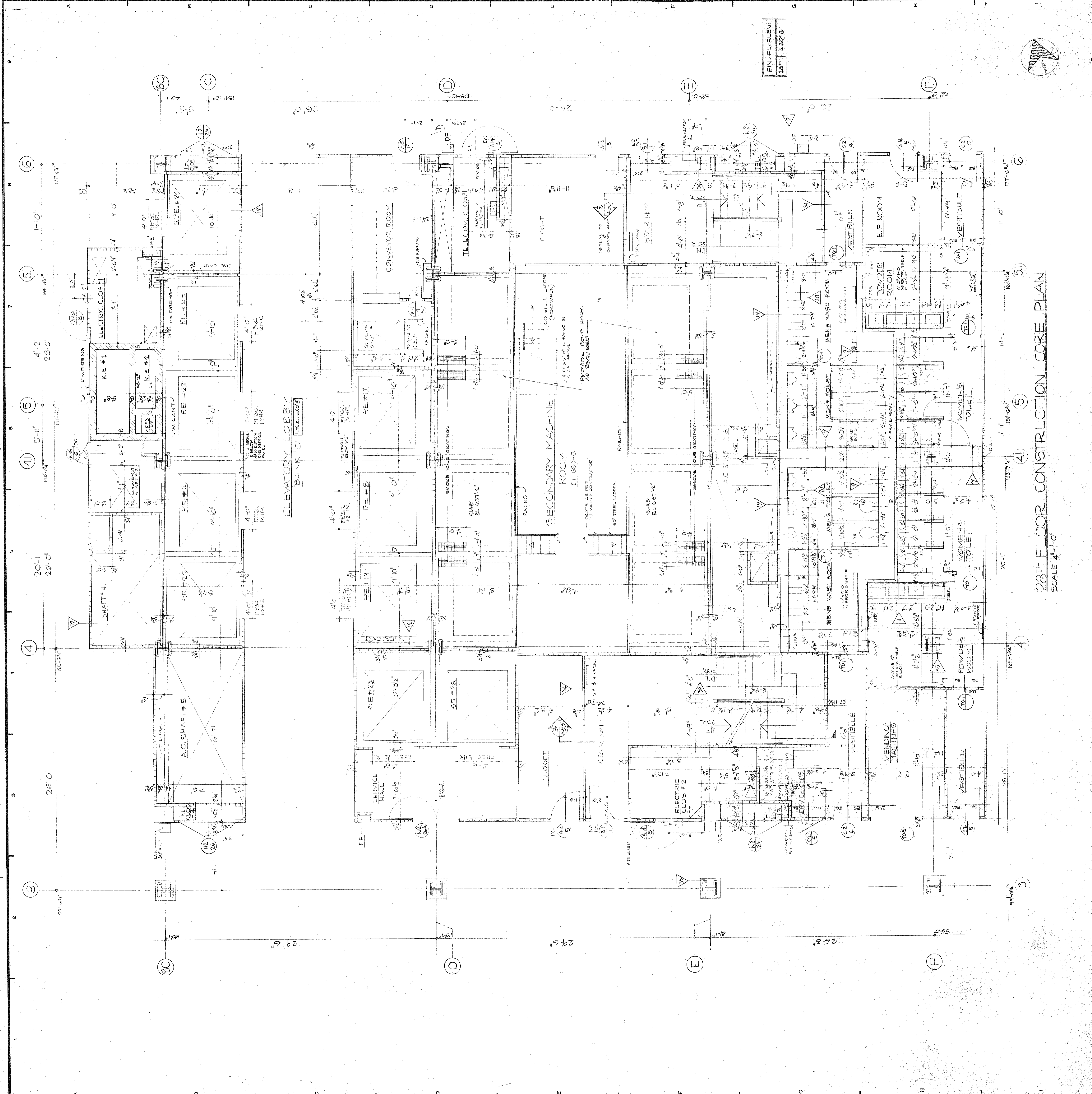
28TH FL. CORE PLAN-CONSTRUCTION
(30TH TENANT)

PROJECT NUMBER
7101

DRAWING NUMBER
A 43

DATE
JAN. 10, 1972

SCALE
1/4" = 1'-0"



28TH FLOOR CONSTRUCTION CORE PLAN
SCALE 1/4" = 1'-0"

FIN. FL. ELEV.
15' - 6 5/8"

