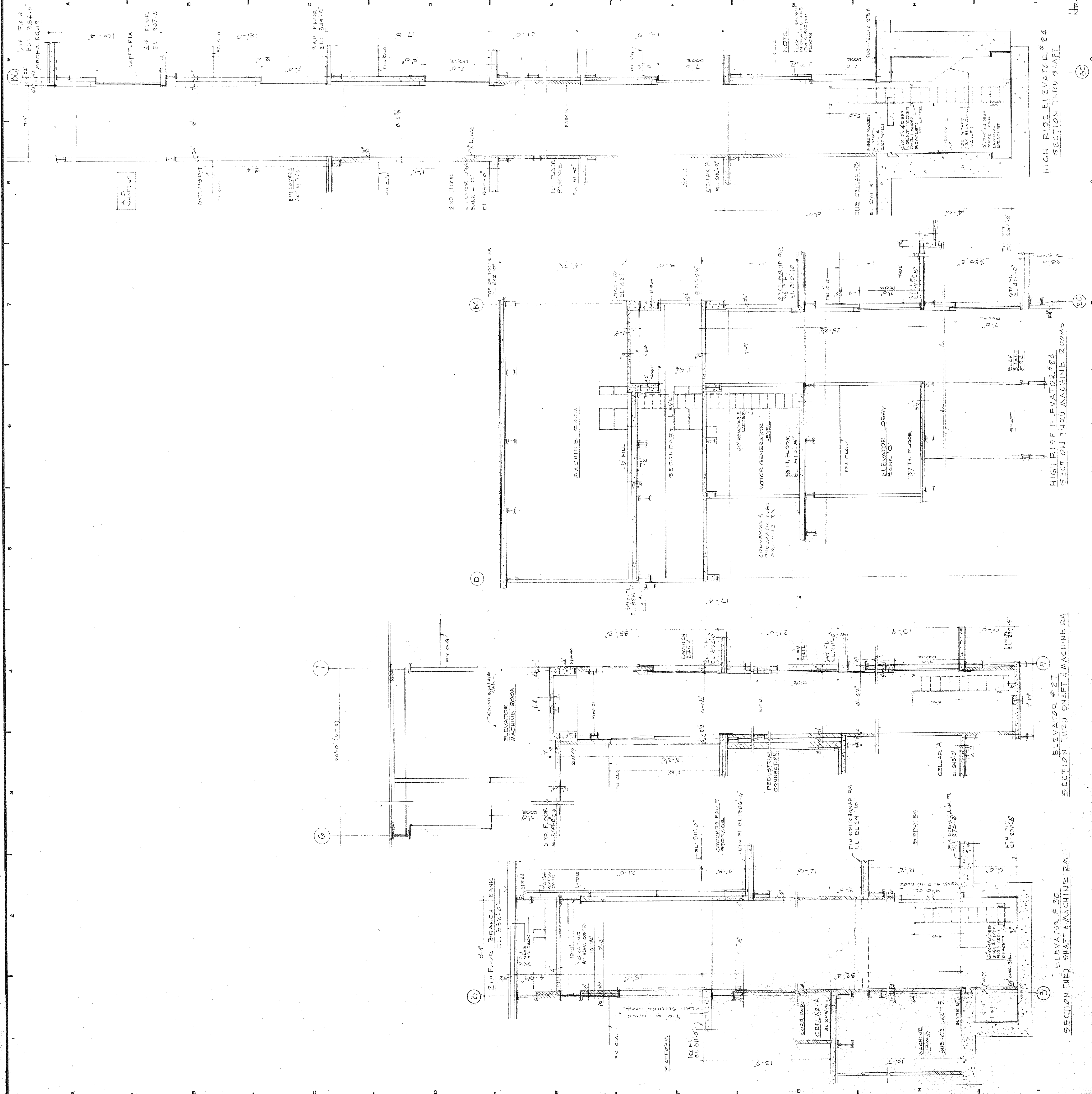


REVISIONS	
NO.	DESCRIPTION
A	1-17-72 GENERAL REVISIONS
B	3-14-72 GENERAL REVISIONS
C	5-1-72 GENERAL REVISIONS



NO.	DATE	DESCRIPTION	PKG. NO.
1	1-17-72	GENERAL REVISIONS	PC 21215
2	3-14-72	GENERAL REVISIONS	PC 21215
3	5-1-72	GENERAL REVISIONS	PC 21215
4	1-24-72	PC 21215	PC 21215
5	1-24-72	PC 21215	PC 21215
6	1-24-72	PC 21215	PC 21215
7	1-24-72	PC 21215	PC 21215
8	1-24-72	PC 21215	PC 21215
9	1-24-72	PC 21215	PC 21215
10	1-24-72	PC 21215	PC 21215
11	1-24-72	PC 21215	PC 21215
12	1-24-72	PC 21215	PC 21215
13	1-24-72	PC 21215	PC 21215
14	1-24-72	PC 21215	PC 21215
15	1-24-72	PC 21215	PC 21215
16	1-24-72	PC 21215	PC 21215
17	1-24-72	PC 21215	PC 21215
18	1-24-72	PC 21215	PC 21215
19	1-24-72	PC 21215	PC 21215
20	1-24-72	PC 21215	PC 21215
21	1-24-72	PC 21215	PC 21215
22	1-24-72	PC 21215	PC 21215
23	1-24-72	PC 21215	PC 21215
24	1-24-72	PC 21215	PC 21215
25	1-24-72	PC 21215	PC 21215
26	1-24-72	PC 21215	PC 21215
27	1-24-72	PC 21215	PC 21215
28	1-24-72	PC 21215	PC 21215
29	1-24-72	PC 21215	PC 21215
30	1-24-72	PC 21215	PC 21215
31	1-24-72	PC 21215	PC 21215
32	1-24-72	PC 21215	PC 21215
33	1-24-72	PC 21215	PC 21215
34	1-24-72	PC 21215	PC 21215
35	1-24-72	PC 21215	PC 21215
36	1-24-72	PC 21215	PC 21215
37	1-24-72	PC 21215	PC 21215
38	1-24-72	PC 21215	PC 21215
39	1-24-72	PC 21215	PC 21215
40	1-24-72	PC 21215	PC 21215
41	1-24-72	PC 21215	PC 21215
42	1-24-72	PC 21215	PC 21215
43	1-24-72	PC 21215	PC 21215
44	1-24-72	PC 21215	PC 21215
45	1-24-72	PC 21215	PC 21215
46	1-24-72	PC 21215	PC 21215
47	1-24-72	PC 21215	PC 21215
48	1-24-72	PC 21215	PC 21215
49	1-24-72	PC 21215	PC 21215
50	1-24-72	PC 21215	PC 21215
51	1-24-72	PC 21215	PC 21215
52	1-24-72	PC 21215	PC 21215
53	1-24-72	PC 21215	PC 21215
54	1-24-72	PC 21215	PC 21215
55	1-24-72	PC 21215	PC 21215
56	1-24-72	PC 21215	PC 21215
57	1-24-72	PC 21215	PC 21215
58	1-24-72	PC 21215	PC 21215
59	1-24-72	PC 21215	PC 21215
60	1-24-72	PC 21215	PC 21215

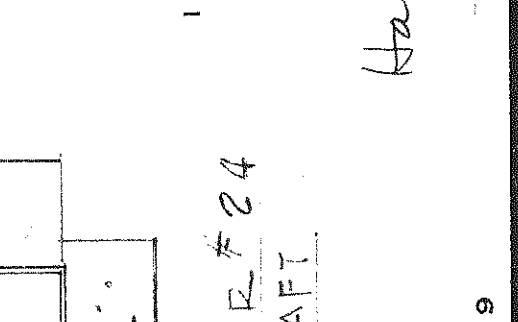
BANKERS TRUST PLAZA

A FISHER BROTHERS PROJECT

GREENWICH AND LIBERTY ST. N. Y. N. Y.
 SHREVE LAMB & HARMON ASSOCIATES P.C.
 ARCHITECTS
 475 PARK AVENUE SOUTH N. Y. N. Y. 10006
 PETERSON AND BRICKBAUER ASSOCIATED ARCHITECTS
 919 THIRD AVENUE N. Y. N. Y. 10022
 THE OFFICE OF JAMES RUDERMAN STRUCTURAL ENGINEERS
 515 MADISON AVENUE N. Y. N. Y. 10022
 J. A. ROSS, BAUM & BOLLES MECH. & ELEC. ENGINEERS
 345 PARK AVENUE N. Y. N. Y. 10022

ELEVATOR SECTIONS
 SHEET NO. 5

PROJECT NUMBER 7101
 DRAWING NUMBER A 59
 DATE NOV. 4, 1971
 SCALE 1/8" = 1'-0"



High Rise Elevator #24 SECTION THRU SHAFT

High Rise Elevator #24 SECTION THRU MACHINE ROOMS

ELEVATOR #27 SECTION THRU SHAFT 3 MACHINE RA

ELEVATOR #30 SECTION THRU SHAFT 4 MACHINE RA