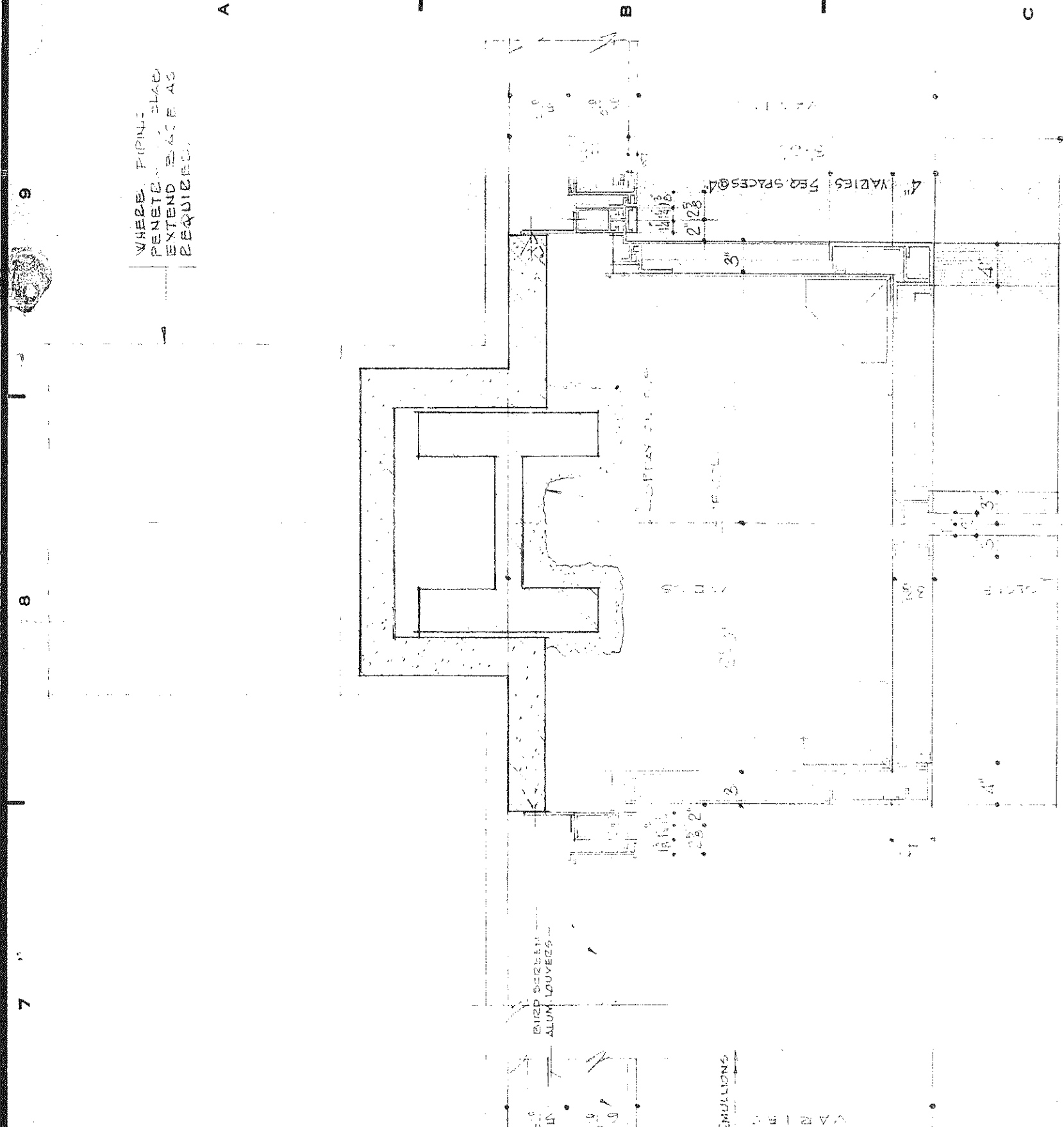


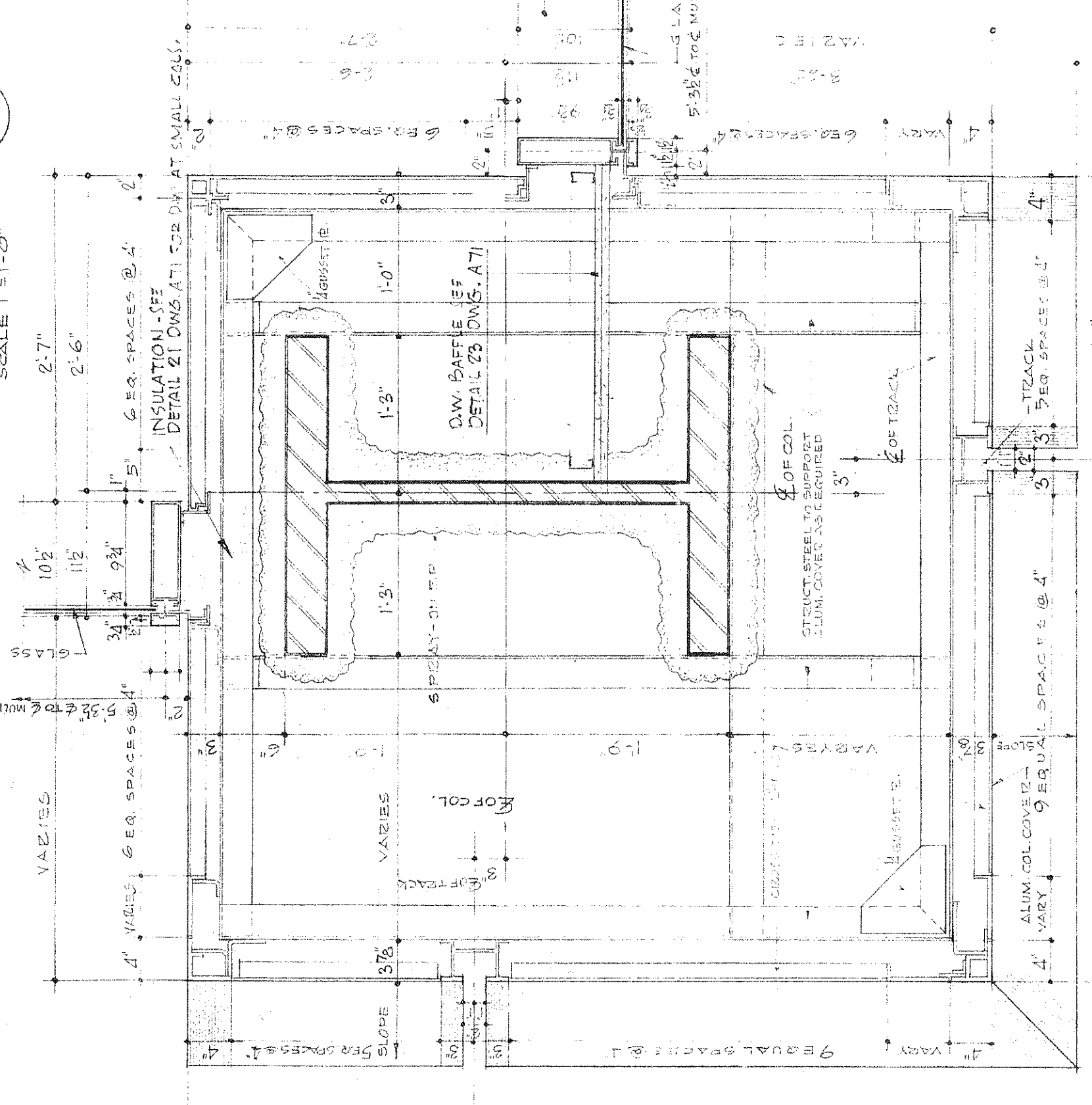
REVISIONS

NO.	DATE	DESCRIPTION
A	10-15-77	ADDED CLADDING NOTES FOR GLASS PARTS AND PANELS TO BE SUBMITTED AS NOTED.
B	11-11-77	GENERAL REVISIONS
C	9-11-72	ADDED 1/2" MIN. INS. TO ALL EXTERIOR WALLS.
D	2-20-73	ADDED 1/2" MIN. INS. TO ALL EXTERIOR WALLS.

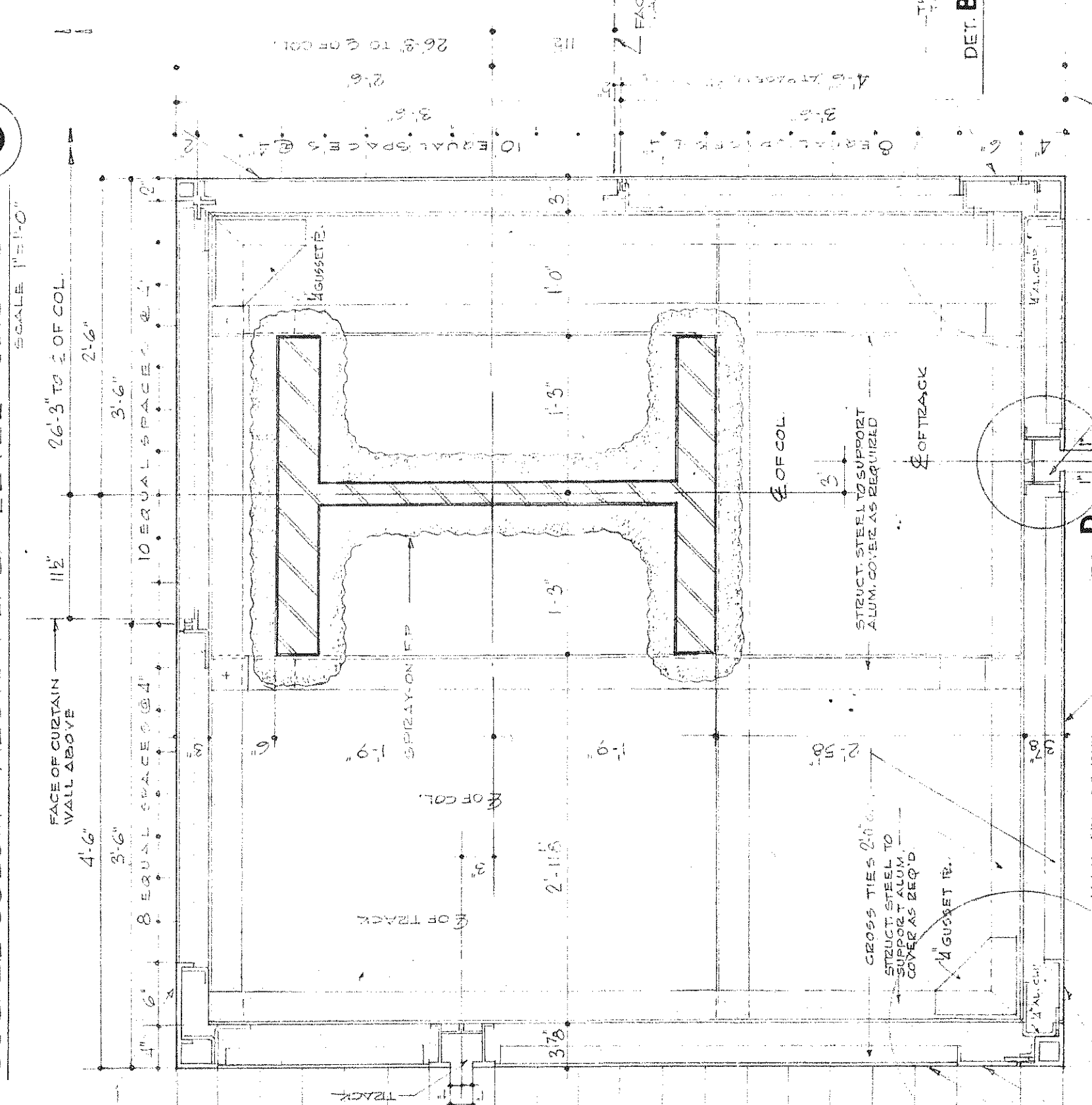
NO.	DATE	DESCRIPTION
1	7-8-71	PC 21109
2	7-8-71	PC 21109
3	8-17-71	PC 20223
4	1-11-72	PC 21109
5	4-12-72	PC 21109
6	2-2-73	PC 21109
7	2-2-73	PC 21109
8	2-2-73	PC 21109
9	2-2-73	PC 21109
10	2-2-73	PC 21109
11	2-2-73	PC 21109
12	2-2-73	PC 21109
13	2-2-73	PC 21109
14	2-2-73	PC 21109
15	2-2-73	PC 21109
16	2-2-73	PC 21109
17	2-2-73	PC 21109
18	2-2-73	PC 21109
19	2-2-73	PC 21109
20	2-2-73	PC 21109
21	2-2-73	PC 21109
22	2-2-73	PC 21109
23	2-2-73	PC 21109
24	2-2-73	PC 21109
25	2-2-73	PC 21109
26	2-2-73	PC 21109
27	2-2-73	PC 21109
28	2-2-73	PC 21109
29	2-2-73	PC 21109
30	2-2-73	PC 21109
31	2-2-73	PC 21109
32	2-2-73	PC 21109
33	2-2-73	PC 21109
34	2-2-73	PC 21109
35	2-2-73	PC 21109
36	2-2-73	PC 21109
37	2-2-73	PC 21109
38	2-2-73	PC 21109
39	2-2-73	PC 21109
40	2-2-73	PC 21109
41	2-2-73	PC 21109
42	2-2-73	PC 21109
43	2-2-73	PC 21109
44	2-2-73	PC 21109
45	2-2-73	PC 21109
46	2-2-73	PC 21109
47	2-2-73	PC 21109
48	2-2-73	PC 21109
49	2-2-73	PC 21109
50	2-2-73	PC 21109



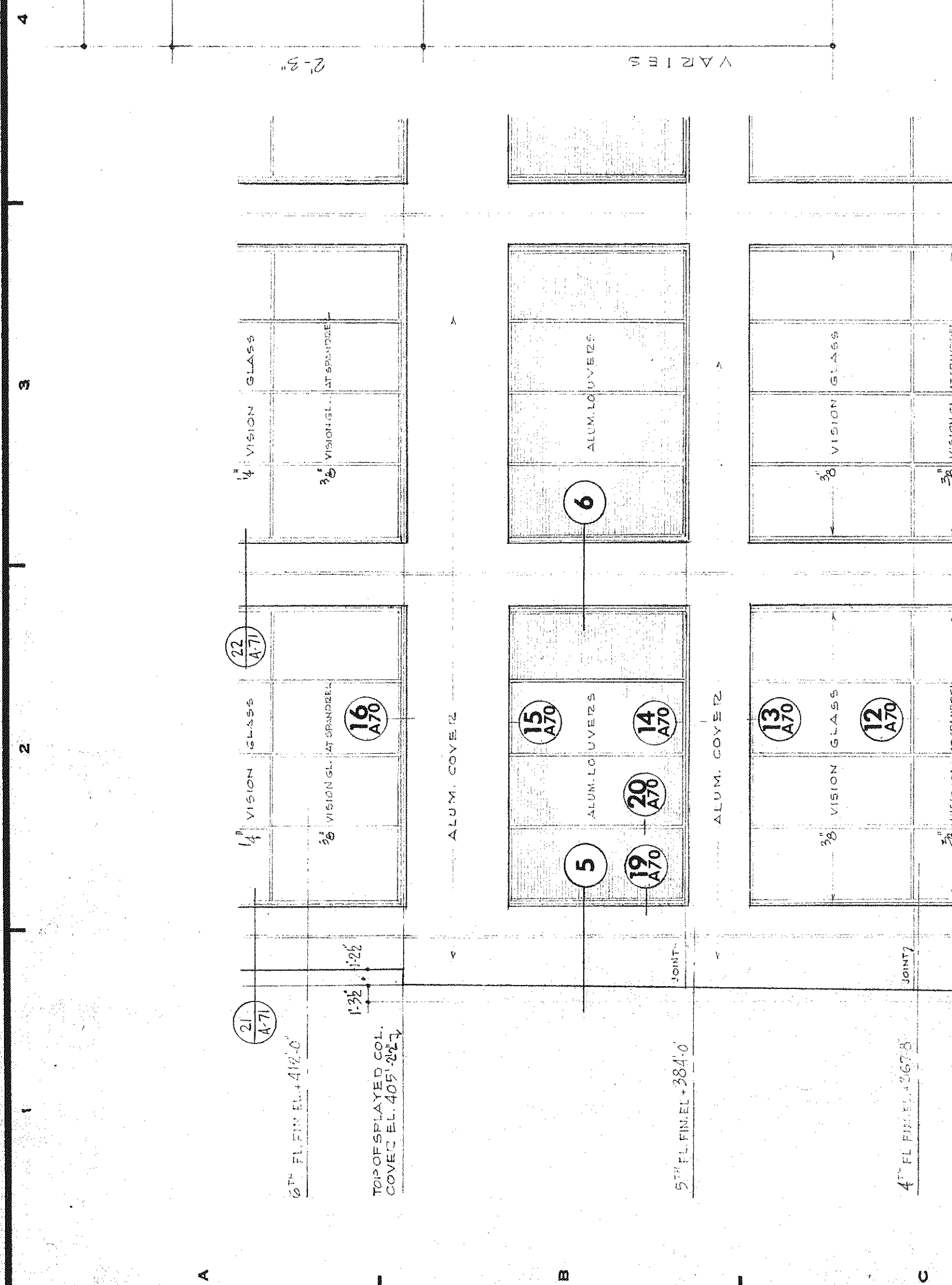
CORNER COLUMN AT BASE LEVEL - SECTION 1-1 SCALE 1/4" = 1'-0"



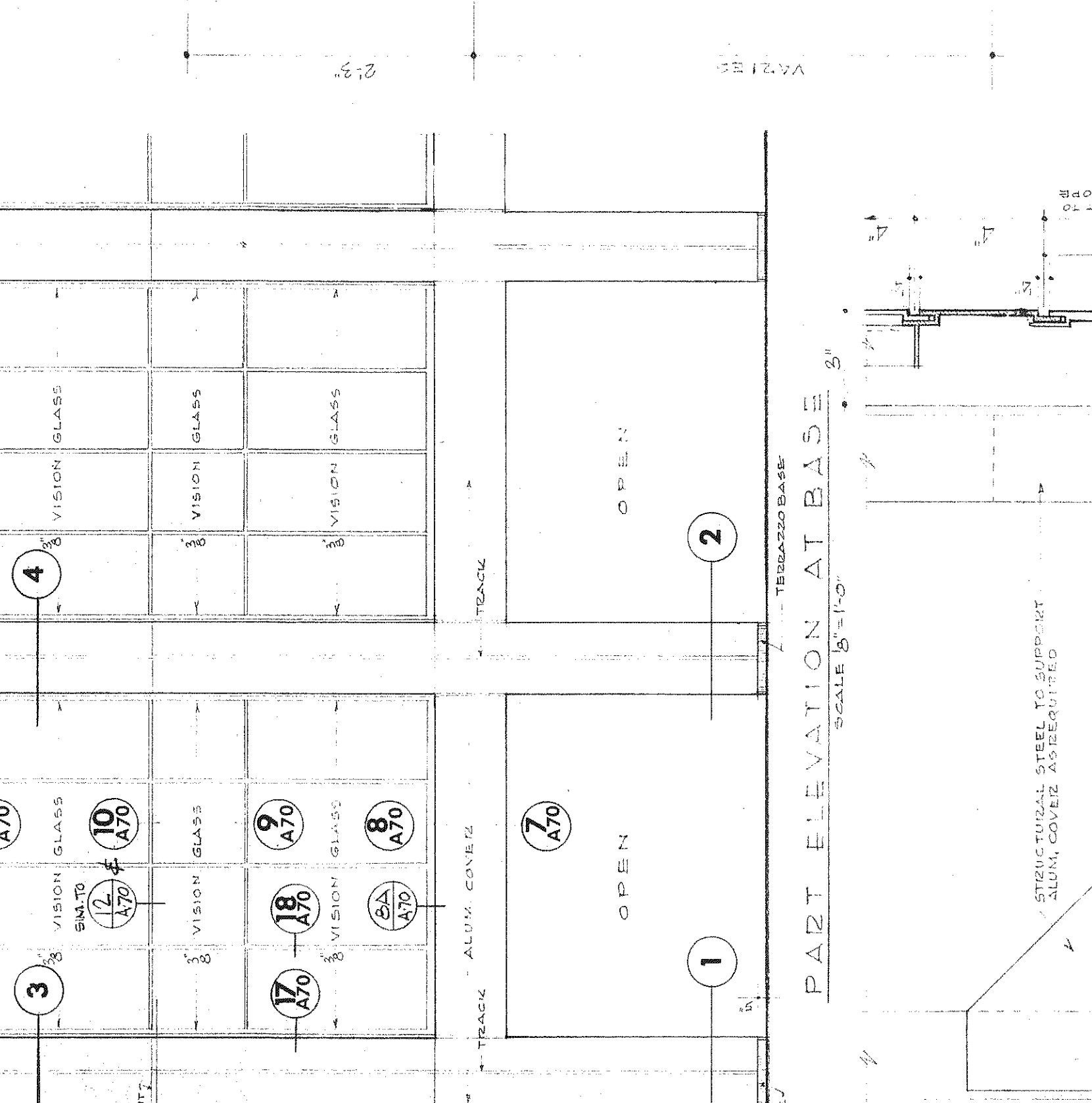
INTERMEDIATE COLUMN AT BASE LEVEL - SECTION 3-3 SCALE 1/4" = 1'-0"



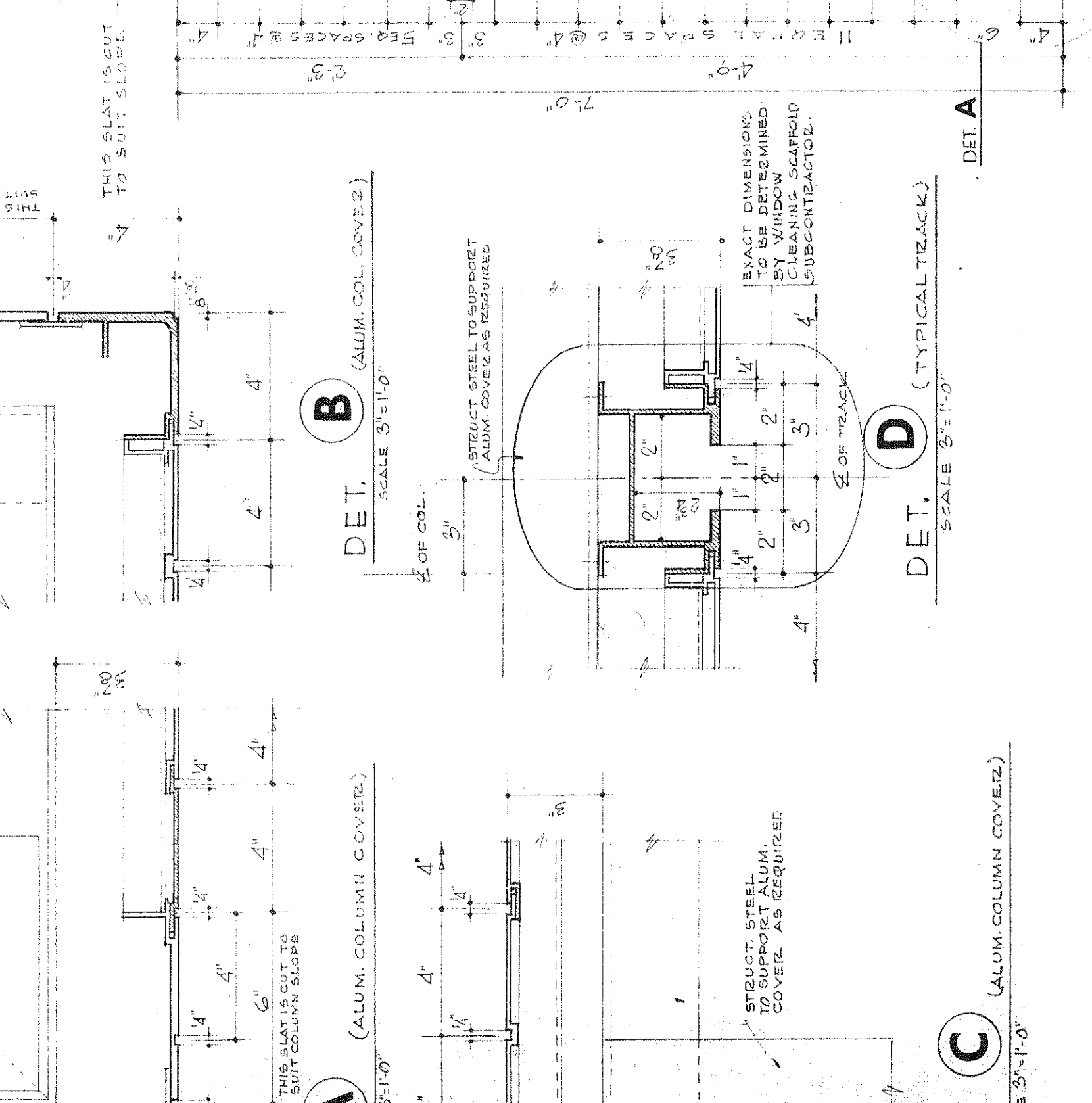
CORNER COLUMN AT BASE LEVEL - SECTION 5-5 SCALE 1/4" = 1'-0"



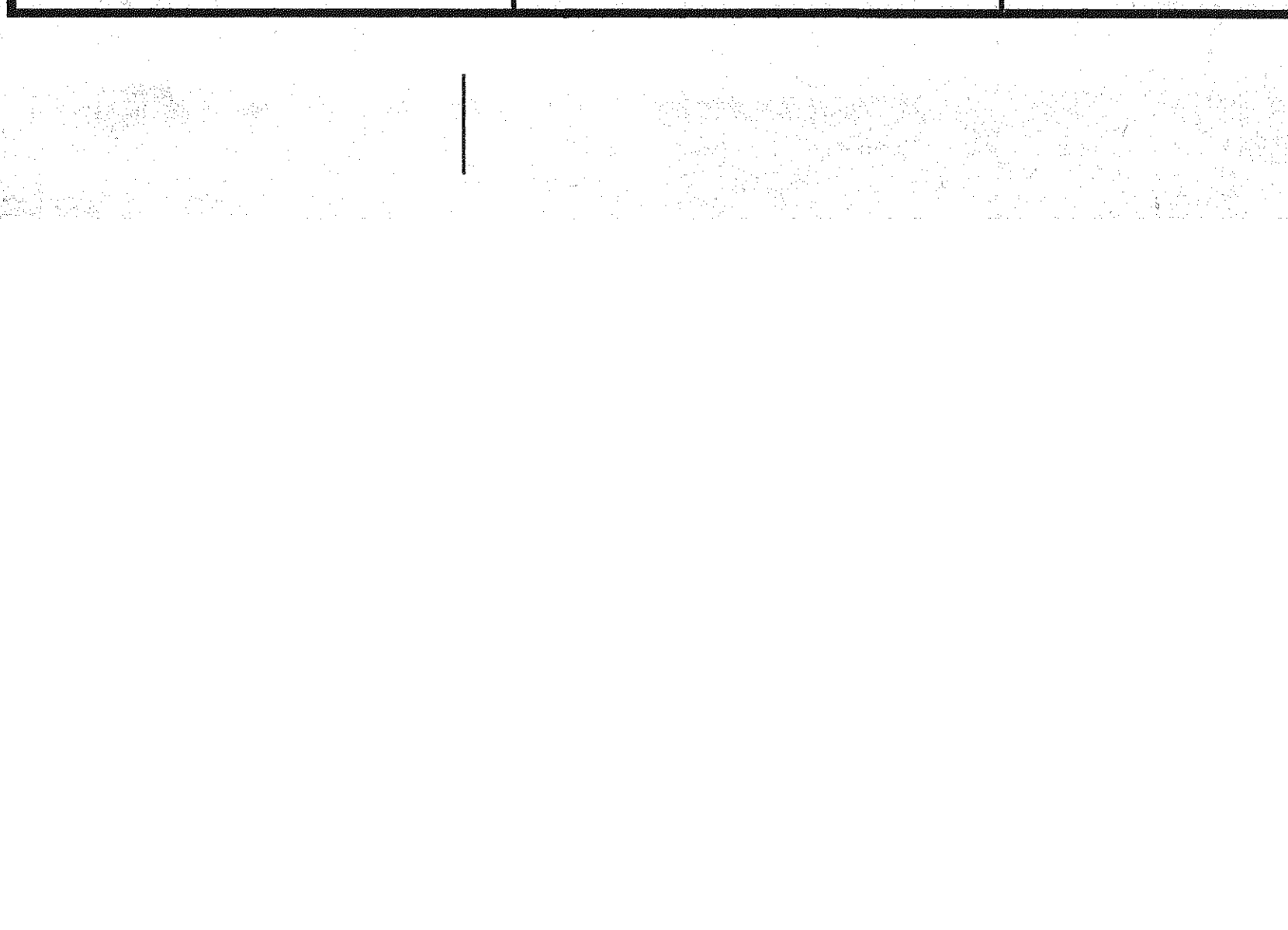
CORNER COLUMN ABOVE PLAZA LEVEL - SECTION 7-7 SCALE 1/4" = 1'-0"



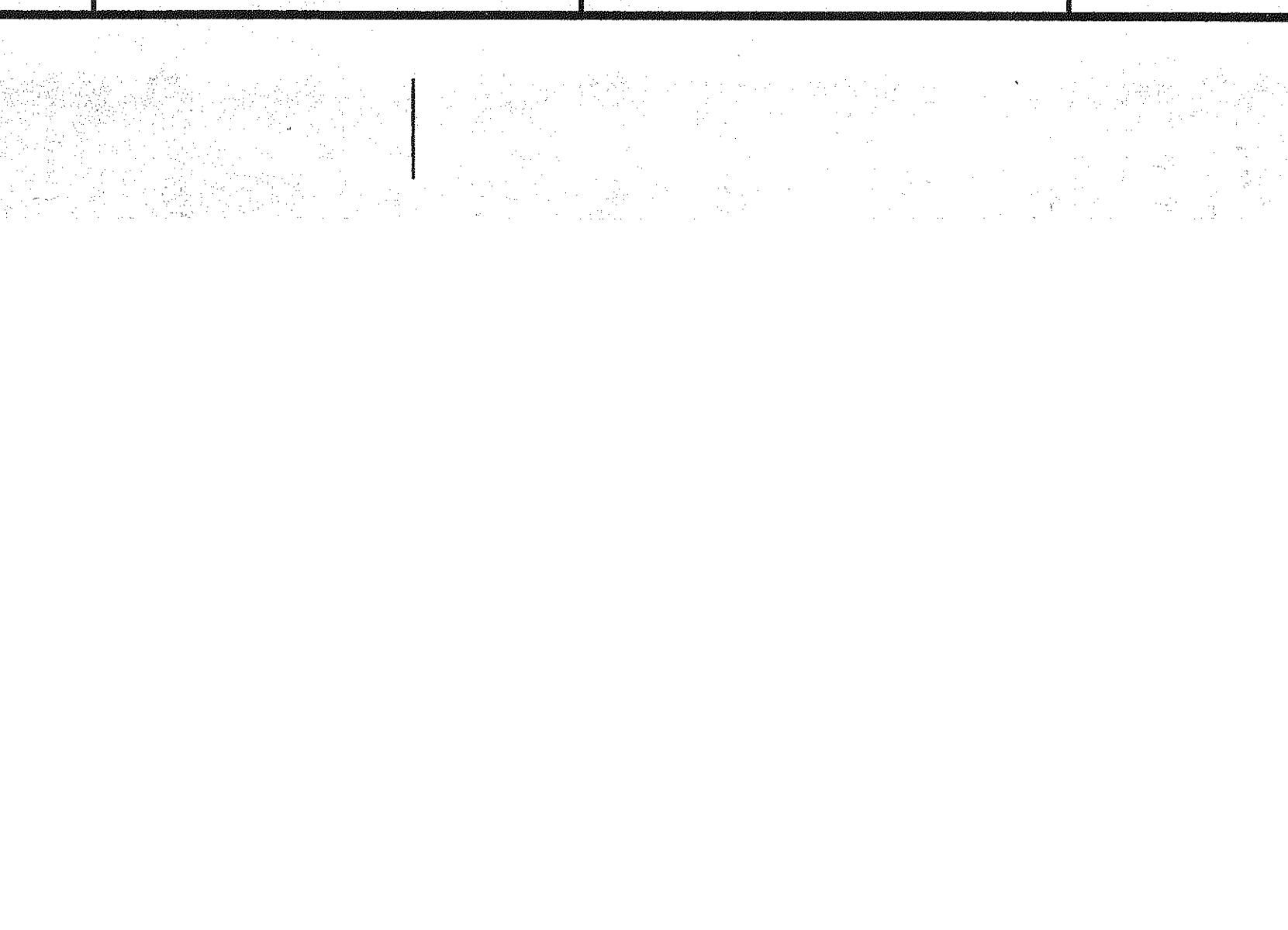
INTERMEDIATE COLUMN ABOVE PLAZA LEVEL - SECTION 9-9 SCALE 1/4" = 1'-0"



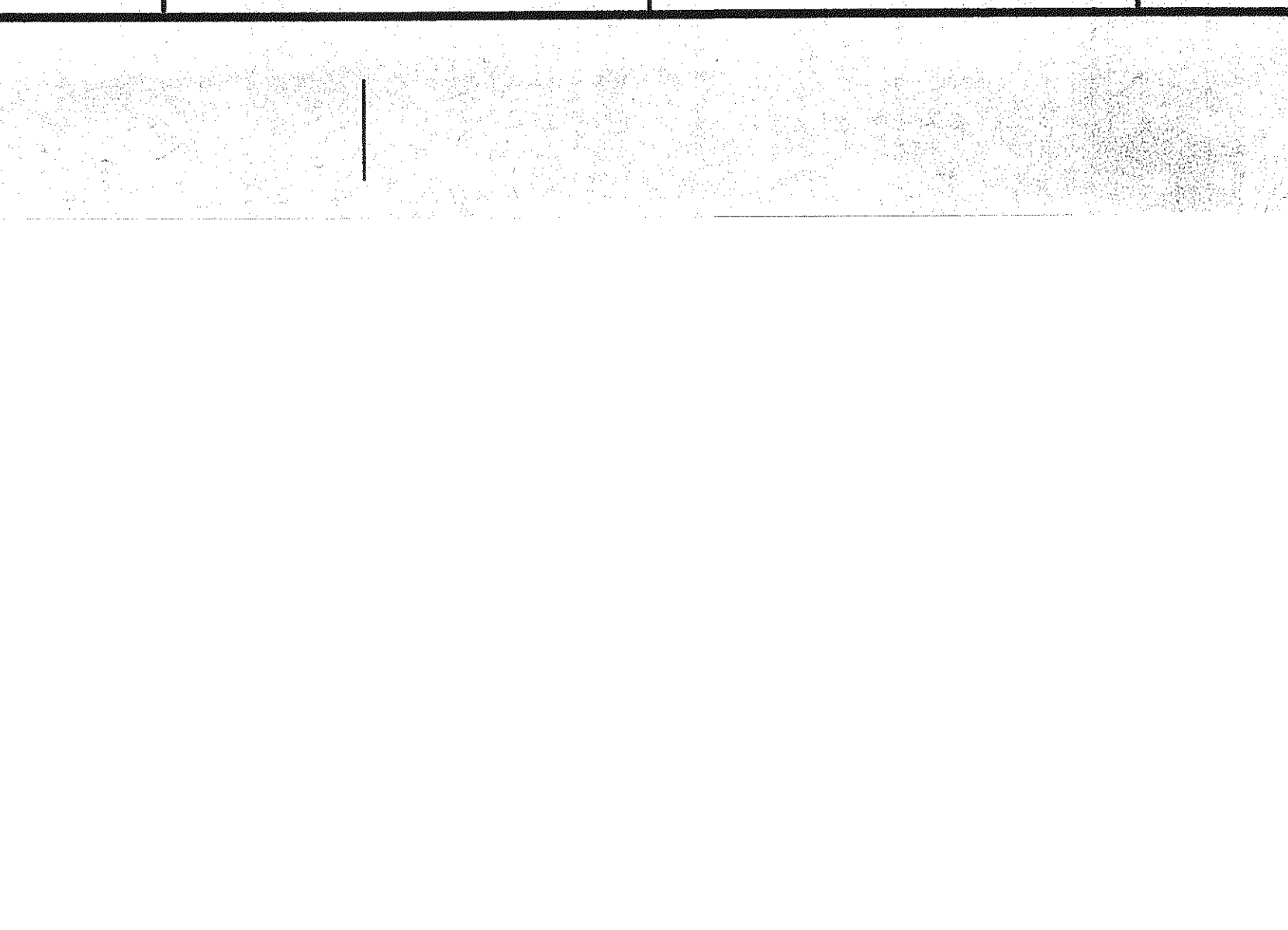
CORNER COLUMN ABOVE PLAZA LEVEL - SECTION 11-11 SCALE 1/4" = 1'-0"



PART ELEVATION AT BASE SCALE 3/8" = 1'-0"



PART ELEVATION AT BASE SCALE 3/8" = 1'-0"



PART ELEVATION AT BASE SCALE 3/8" = 1'-0"

BANKERS TRUST PLAZA
A FISHER BROTHERS PROJECT
GREENWICH AND LIBERTY ST. N. Y. N. Y.
SHREVE LAMB & HARMON ASSOCIATES P.C. ARCHITECTS
475 PARK AVENUE SOUTH N. Y. N. Y. 10016
PETERSON AND BRICKBAUER ASSOCIATED ARCHITECTS
919 THIRD AVENUE N. Y. N. Y. 10022
THE OFFICE OF JAMES RUDERMAN STRUCTURAL ENGINEERS
515 MADISON AVENUE N. Y. N. Y. 10022
J. A. ROSS, BAUM & BOLLES MECH. & ELEC. ENGINEERS
345 PARK AVENUE N. Y. N. Y. 10022

CURTAIN WALL DETAILS
SHEET NO. 1

PROJECT NUMBER 7101
DRAWING NUMBER A69
DATE SEP. 21, 1977
SCALE AS NOTED

REVISIONS

NO. DATE DESCRIPTION