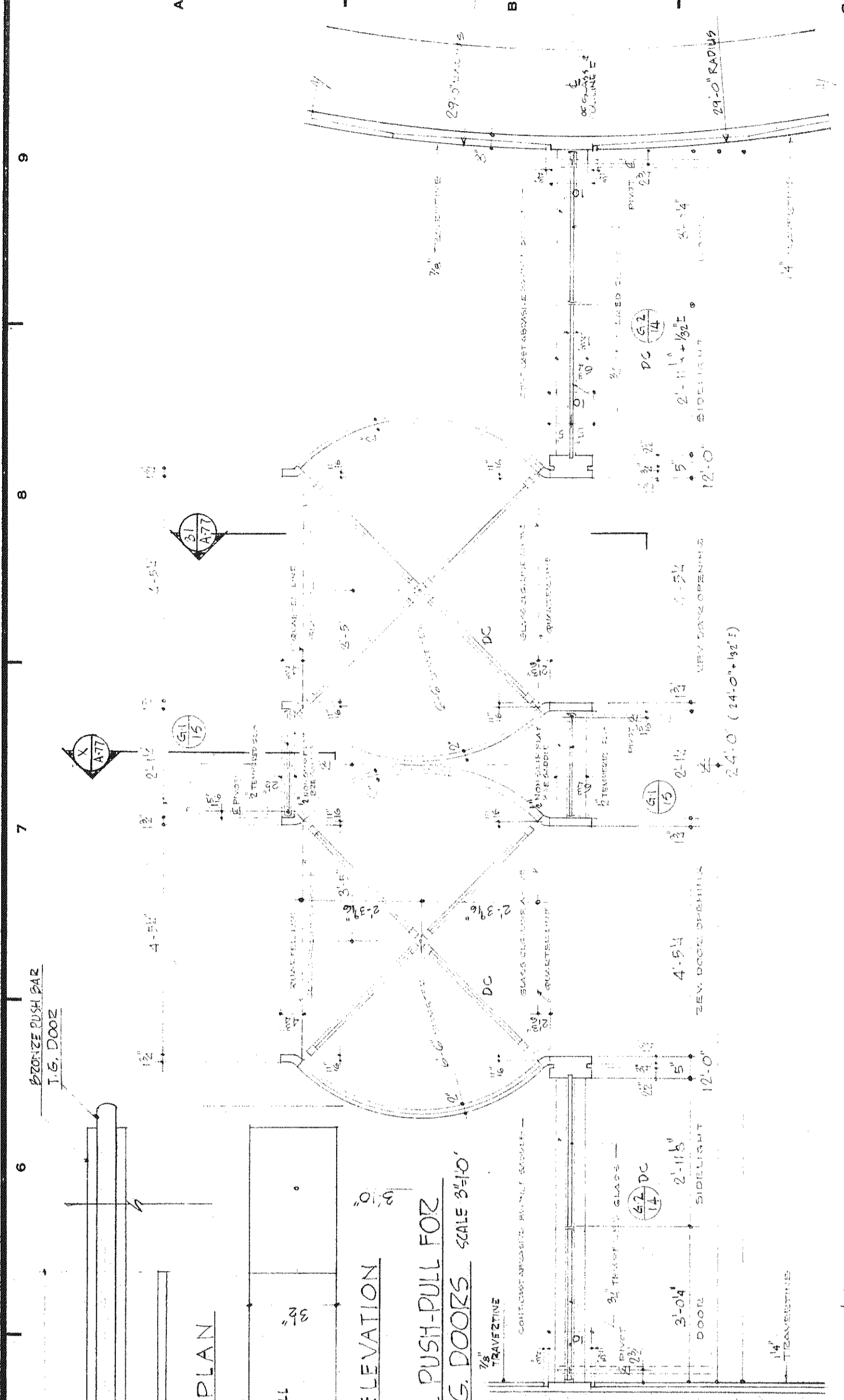
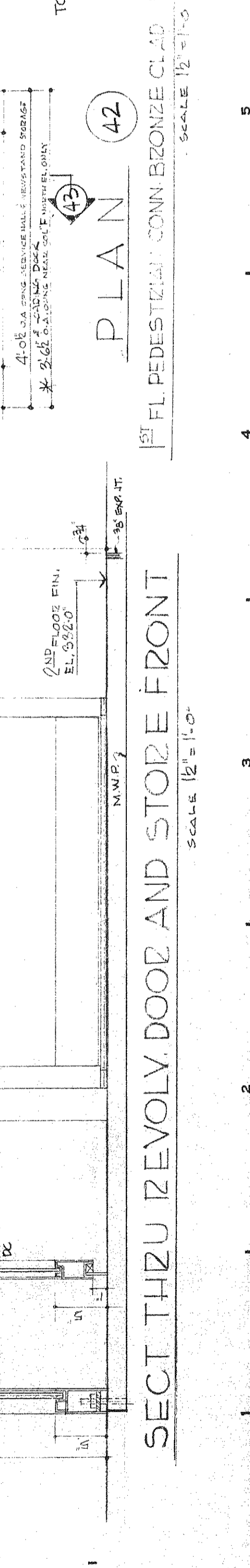
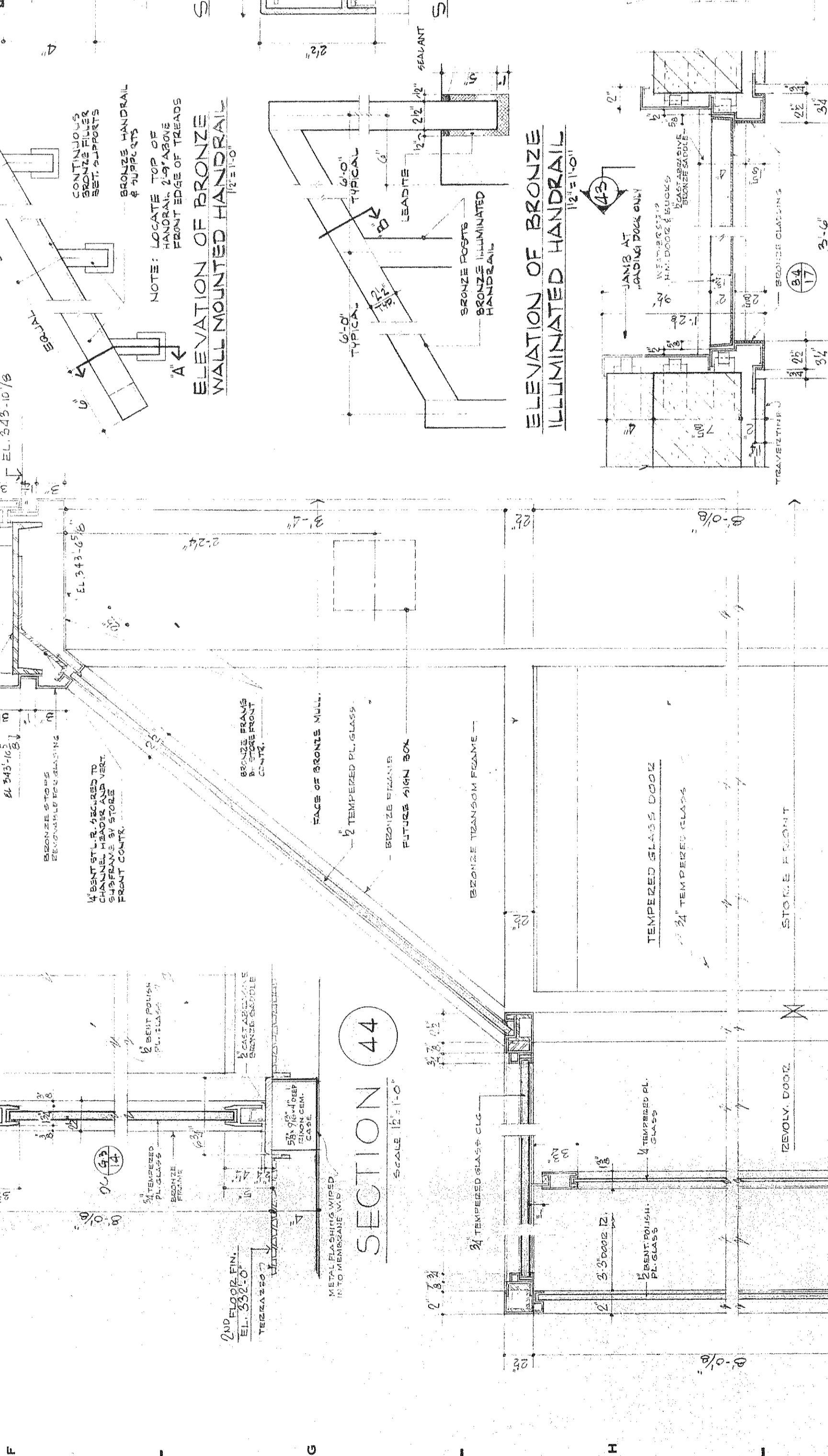
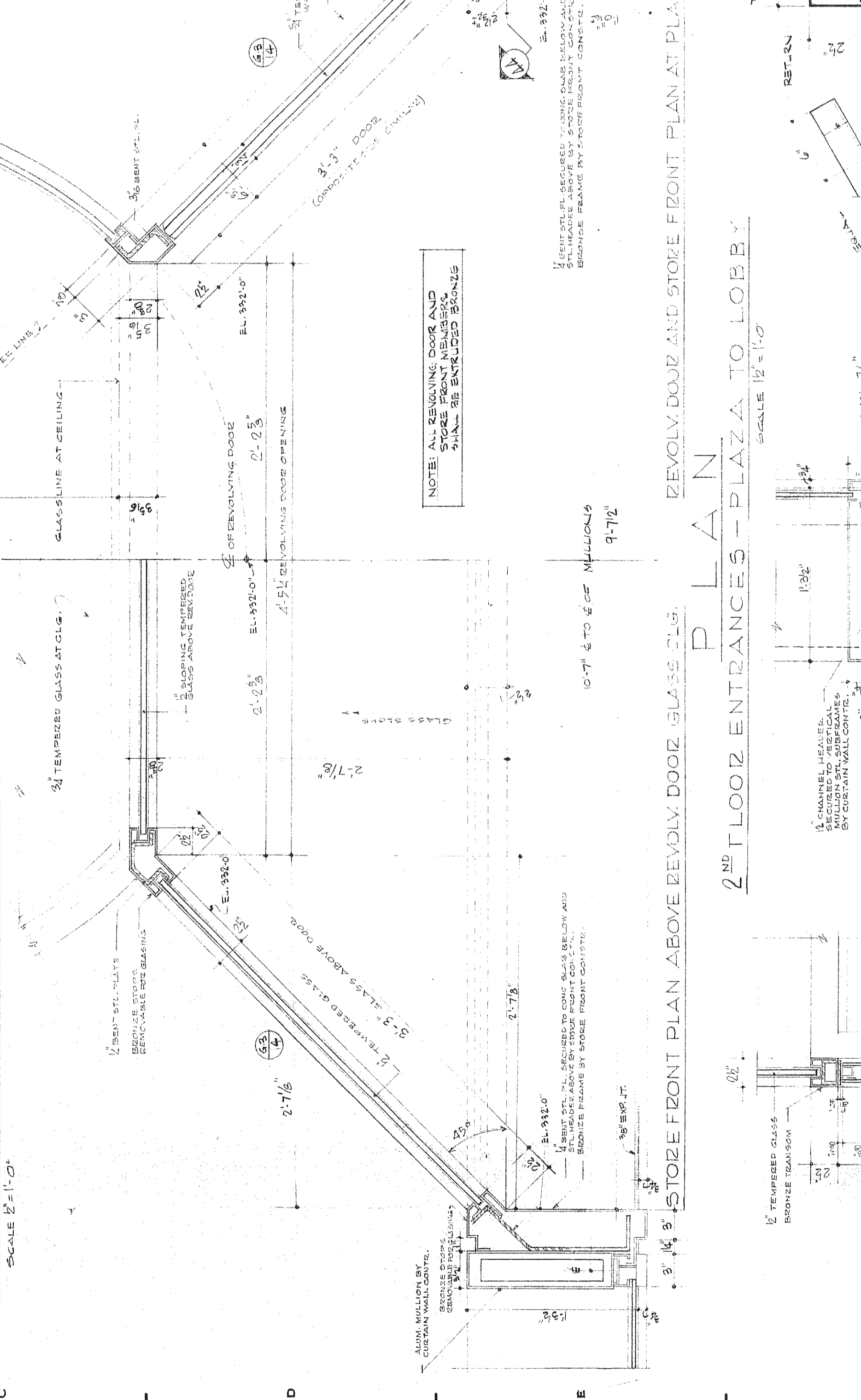
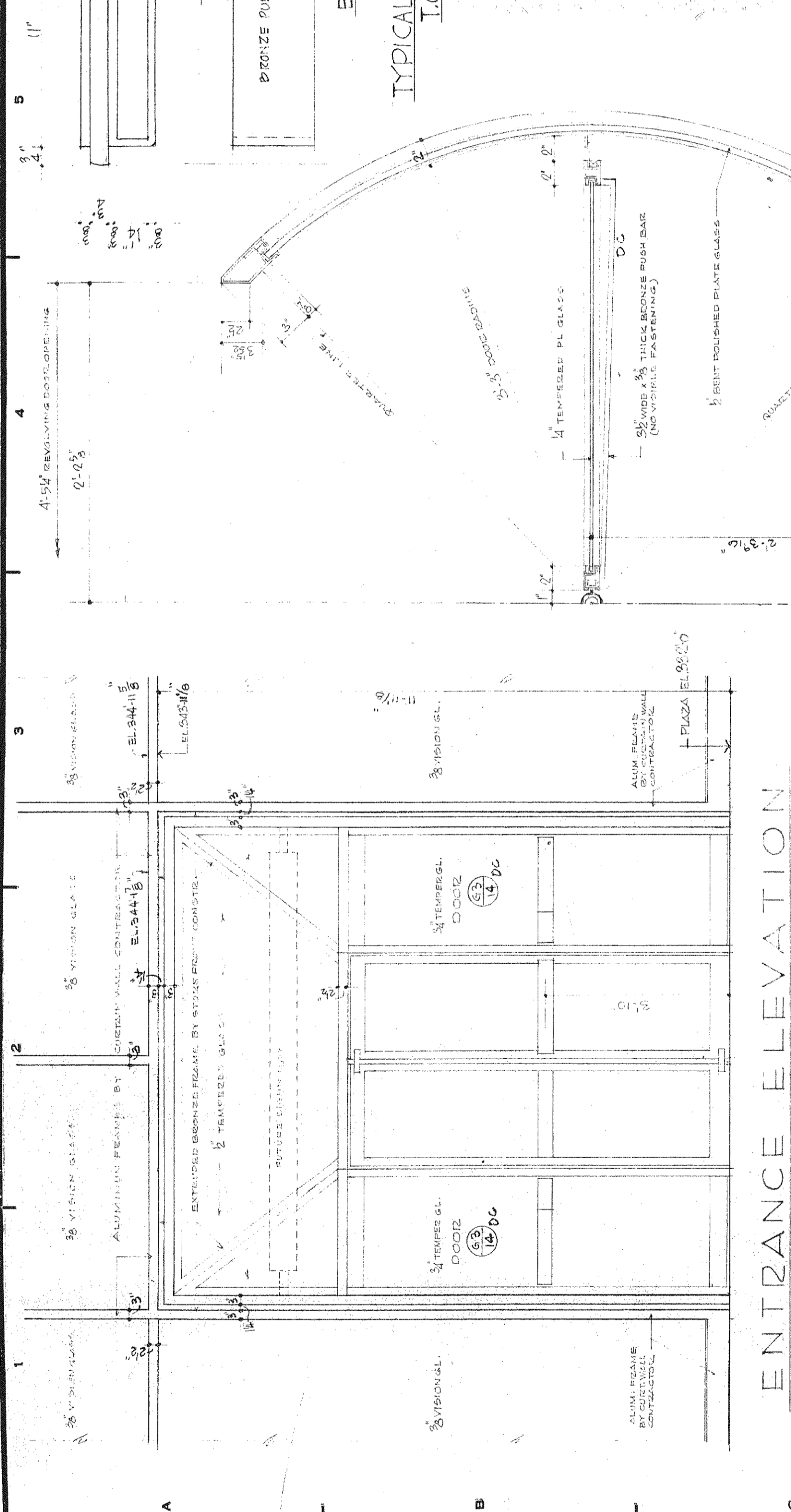
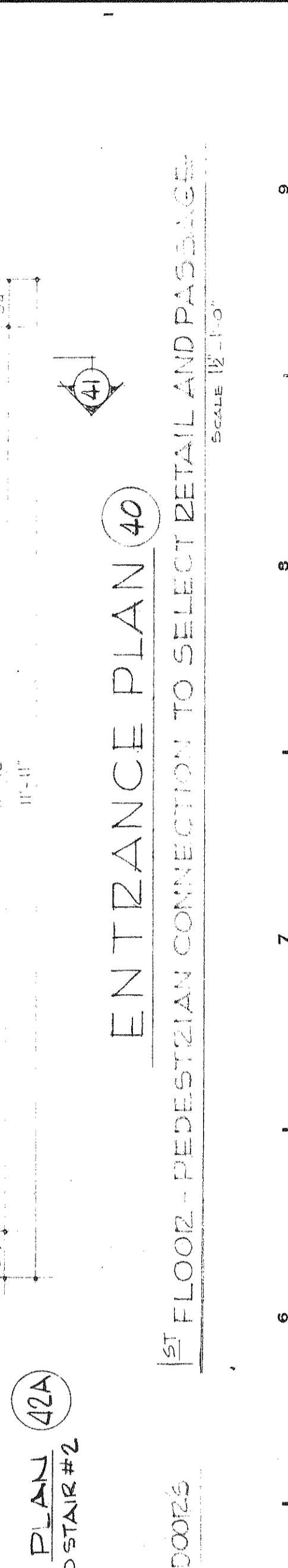
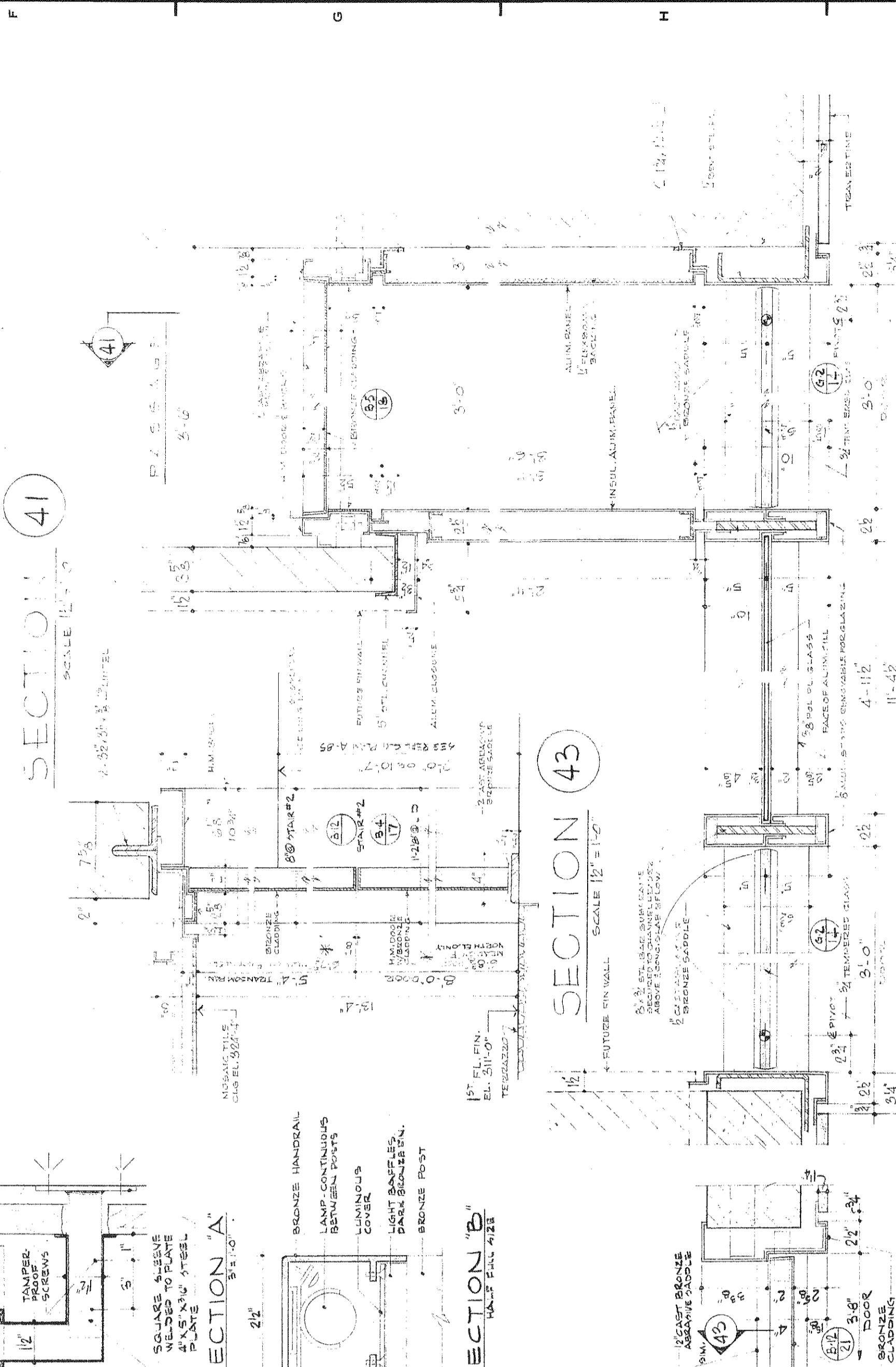
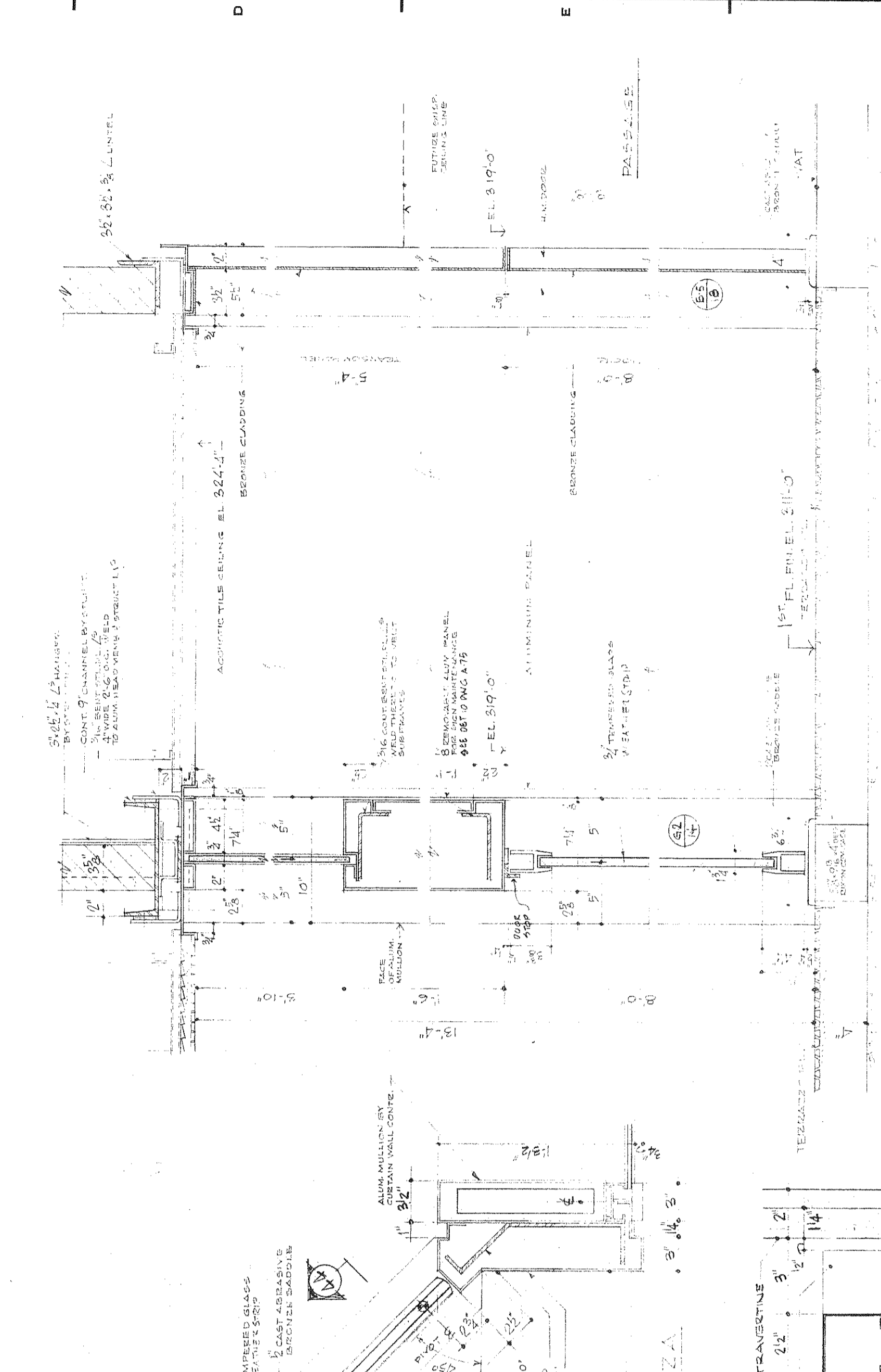


REVISIONS		
NO.	DATE	DESCRIPTION
A	8-12-72	ADD 1/2" DIA. TO DET. # 4145
B	9-1-72	REVISED DET. # 4145 TO SHOW 1/2" DIA. TO DET. # 4145
C	9-19-72	ADD 1/2" DIA. TO DET. # 4145
D	4-12-73	ADD 1/2" DIA. TO DET. # 4145
E	3-11-74	ADD 1/2" DIA. TO DET. # 4145



1ST FL. GREENWICH STREET ENTRANCE PLAN (39)
(FOR REVOLVING DOOR DET. SEE DET. # A-77)



BANKERS TRUST PLAZA

A FISHER BROTHERS PROJECT

GREENWICH AND LIBERTY ST. N. Y. N. Y.

SHREVE LAMB & HARMON ASSOCIATES P.C. ARCHITECTS
475 PARK AVENUE SOUTH N. Y. N. Y. 10016

PETERSON AND BRICKBAUER ASSOCIATED ARCHITECTS
919 THIRD AVENUE N. Y. N. Y. 10022

THE OFFICE OF JAMES RUDERMAN STRUCTURAL ENGINEERS
515 MADISON AVENUE N. Y. N. Y. 10022

JAROS, BAUM & BOLLES MECH. & ELEC. ENGINEERS
345 PARK AVENUE N. Y. N. Y. 10022

ORNAMENTAL METAL DETAILS
SHEET NO. 6

PROJECT NUMBER
7101

DRAWING NUMBER
A 78

DATE
6-29-72

SCALE