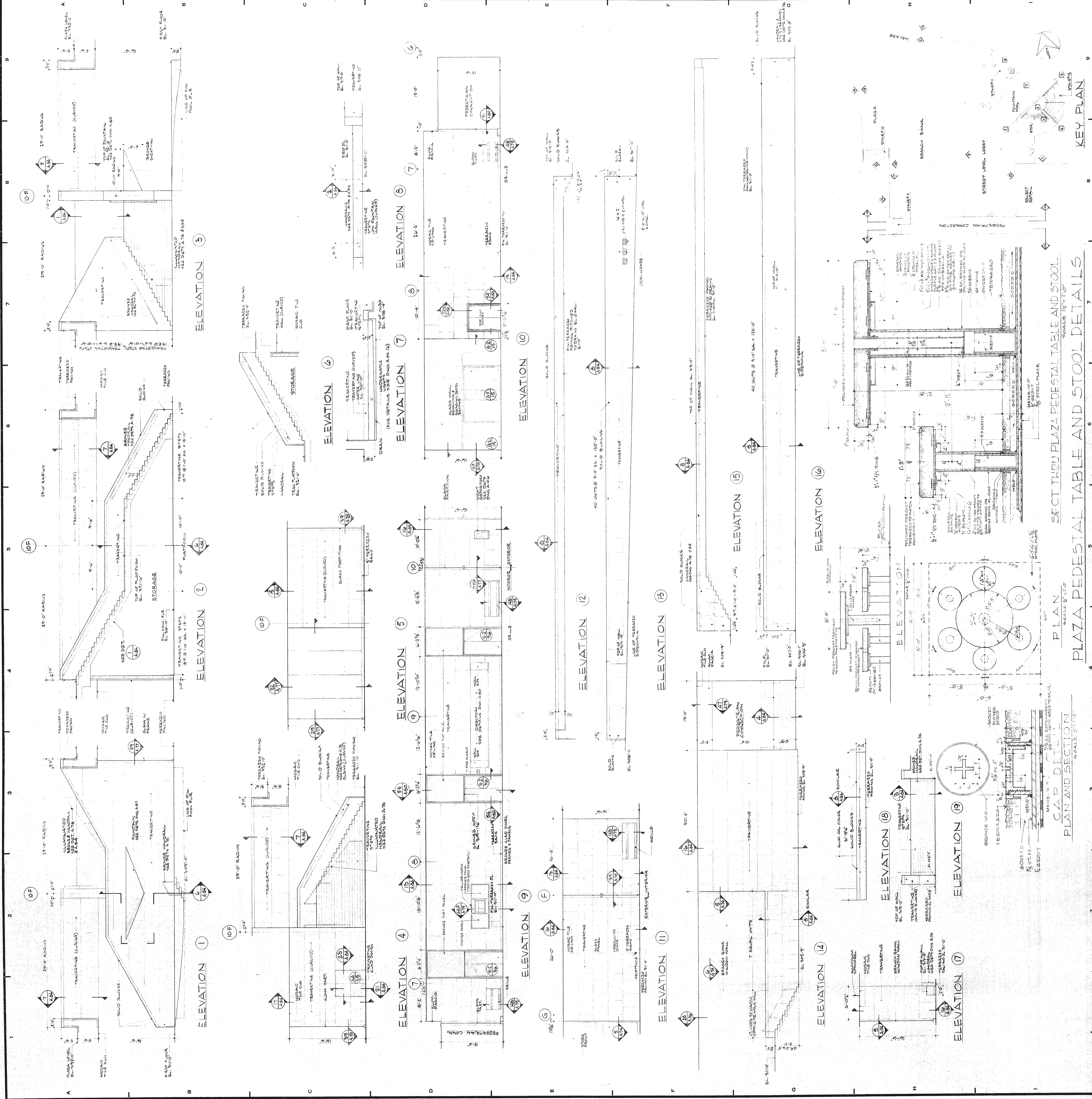


REVISIONS		
NO.	DATE	DESCRIPTION
A	6-12-72	ADDED CORNER DETAIL TO CORNER DETAIL
B	4-12-73	REVISED PERMANENT ELEVATION TO REFLECT PERMANENT ELEVATION
C	2-21-73	REVISED PERMANENT ELEVATION TO REFLECT PERMANENT ELEVATION
D	3-11-74	REVISED PERMANENT ELEVATION TO REFLECT PERMANENT ELEVATION



ISSUED TO	NO.	DATE	PKG. NO.
F/W	1	2-22-72	222520
F/W	2	4-13-72	PC 21977
F/W	3	6-19-72	PC 21977
F/W	4	9-13-72	PC 21977
F/W	5	6-17-73	PC 21977
F/W	6	6-17-73	PC 21977
F/W	7	6-17-73	PC 21977
F/W	8	6-17-73	PC 21977
F/W	9	6-17-73	PC 21977
F/W	10	6-17-73	PC 21977
F/W	11	6-17-73	PC 21977
F/W	12	6-17-73	PC 21977
F/W	13	6-17-73	PC 21977
F/W	14	6-17-73	PC 21977
F/W	15	6-17-73	PC 21977
F/W	16	6-17-73	PC 21977
F/W	17	6-17-73	PC 21977
F/W	18	6-17-73	PC 21977
F/W	19	6-17-73	PC 21977
F/W	20	6-17-73	PC 21977
F/W	21	6-17-73	PC 21977
F/W	22	6-17-73	PC 21977
F/W	23	6-17-73	PC 21977
F/W	24	6-17-73	PC 21977
F/W	25	6-17-73	PC 21977
F/W	26	6-17-73	PC 21977
F/W	27	6-17-73	PC 21977
F/W	28	6-17-73	PC 21977
F/W	29	6-17-73	PC 21977
F/W	30	6-17-73	PC 21977
F/W	31	6-17-73	PC 21977
F/W	32	6-17-73	PC 21977
F/W	33	6-17-73	PC 21977
F/W	34	6-17-73	PC 21977
F/W	35	6-17-73	PC 21977
F/W	36	6-17-73	PC 21977
F/W	37	6-17-73	PC 21977
F/W	38	6-17-73	PC 21977
F/W	39	6-17-73	PC 21977
F/W	40	6-17-73	PC 21977
F/W	41	6-17-73	PC 21977
F/W	42	6-17-73	PC 21977
F/W	43	6-17-73	PC 21977
F/W	44	6-17-73	PC 21977
F/W	45	6-17-73	PC 21977
F/W	46	6-17-73	PC 21977
F/W	47	6-17-73	PC 21977
F/W	48	6-17-73	PC 21977
F/W	49	6-17-73	PC 21977
F/W	50	6-17-73	PC 21977
F/W	51	6-17-73	PC 21977
F/W	52	6-17-73	PC 21977
F/W	53	6-17-73	PC 21977
F/W	54	6-17-73	PC 21977
F/W	55	6-17-73	PC 21977
F/W	56	6-17-73	PC 21977
F/W	57	6-17-73	PC 21977
F/W	58	6-17-73	PC 21977
F/W	59	6-17-73	PC 21977
F/W	60	6-17-73	PC 21977
F/W	61	6-17-73	PC 21977
F/W	62	6-17-73	PC 21977
F/W	63	6-17-73	PC 21977
F/W	64	6-17-73	PC 21977
F/W	65	6-17-73	PC 21977
F/W	66	6-17-73	PC 21977
F/W	67	6-17-73	PC 21977
F/W	68	6-17-73	PC 21977
F/W	69	6-17-73	PC 21977
F/W	70	6-17-73	PC 21977
F/W	71	6-17-73	PC 21977
F/W	72	6-17-73	PC 21977
F/W	73	6-17-73	PC 21977
F/W	74	6-17-73	PC 21977
F/W	75	6-17-73	PC 21977
F/W	76	6-17-73	PC 21977
F/W	77	6-17-73	PC 21977
F/W	78	6-17-73	PC 21977
F/W	79	6-17-73	PC 21977
F/W	80	6-17-73	PC 21977
F/W	81	6-17-73	PC 21977
F/W	82	6-17-73	PC 21977
F/W	83	6-17-73	PC 21977
F/W	84	6-17-73	PC 21977
F/W	85	6-17-73	PC 21977
F/W	86	6-17-73	PC 21977
F/W	87	6-17-73	PC 21977
F/W	88	6-17-73	PC 21977
F/W	89	6-17-73	PC 21977
F/W	90	6-17-73	PC 21977
F/W	91	6-17-73	PC 21977
F/W	92	6-17-73	PC 21977
F/W	93	6-17-73	PC 21977
F/W	94	6-17-73	PC 21977
F/W	95	6-17-73	PC 21977
F/W	96	6-17-73	PC 21977
F/W	97	6-17-73	PC 21977
F/W	98	6-17-73	PC 21977
F/W	99	6-17-73	PC 21977
F/W	100	6-17-73	PC 21977

**BANKERS TRUST PLAZA**

**A FISHER BROTHERS PROJECT**

GREENWICH AND LIBERTY ST. N. Y. N. Y.  
 SHREVE, LAMB & HARMON ASSOCIATES P.C.  
 ARCHITECTS  
 475 PARK AVENUE SOUTH N. Y. N. Y. 10016  
 PETERSON AND BRICKBAUER  
 ASSOCIATED ARCHITECTS  
 919 THIRD AVENUE N. Y. N. Y. 10022  
 THE OFFICE OF JAMES RUDERMAN  
 STRUCTURAL ENGINEERS  
 515 MADISON AVENUE N. Y. N. Y. 10022  
 J. A. ROSS, BAUM & BOLLES  
 MECH. ELEC. ENGINEERS  
 345 PARK AVENUE N. Y. N. Y. 10022

PROJECT NUMBER	7101
DRAWING NUMBER	A82
DATE	2-29-72
SCALE	1/8" = 1'-0"

1ST FLOOR LOBBY FOUNTAIN PERIMETER WALL ELEVATIONS SHEET #1

SECT THRU PLAZA PEDESTAL TABLE AND STOOL  
 SCALE 1/8" = 1'-0"

PLAN AND SECTION  
 SCALE 1/8" = 1'-0"

KEY PLAN