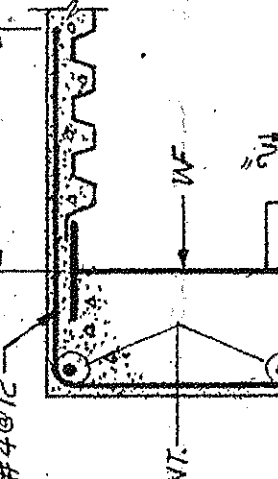
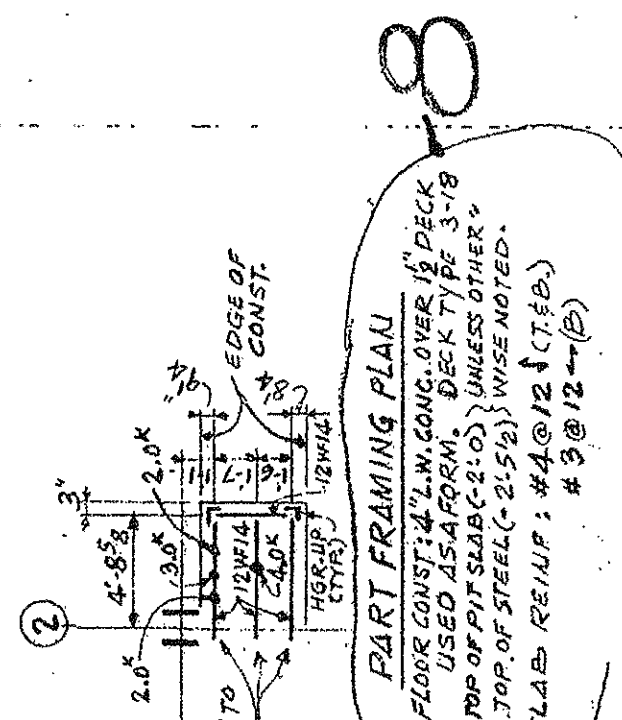
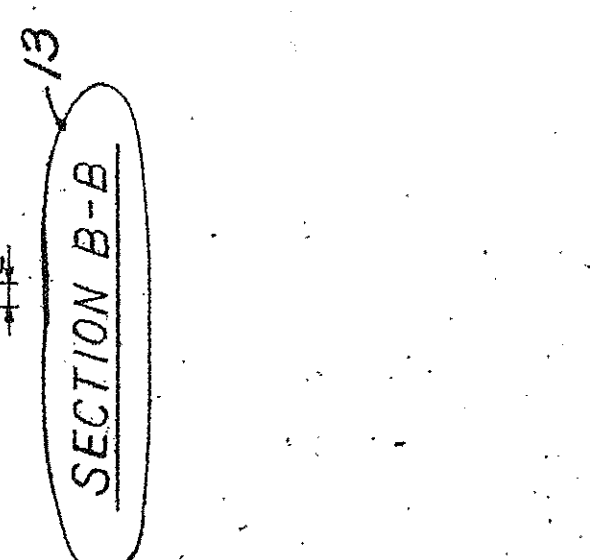
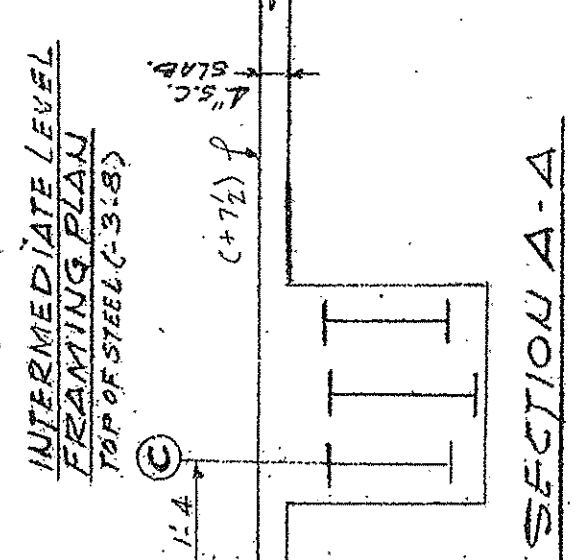
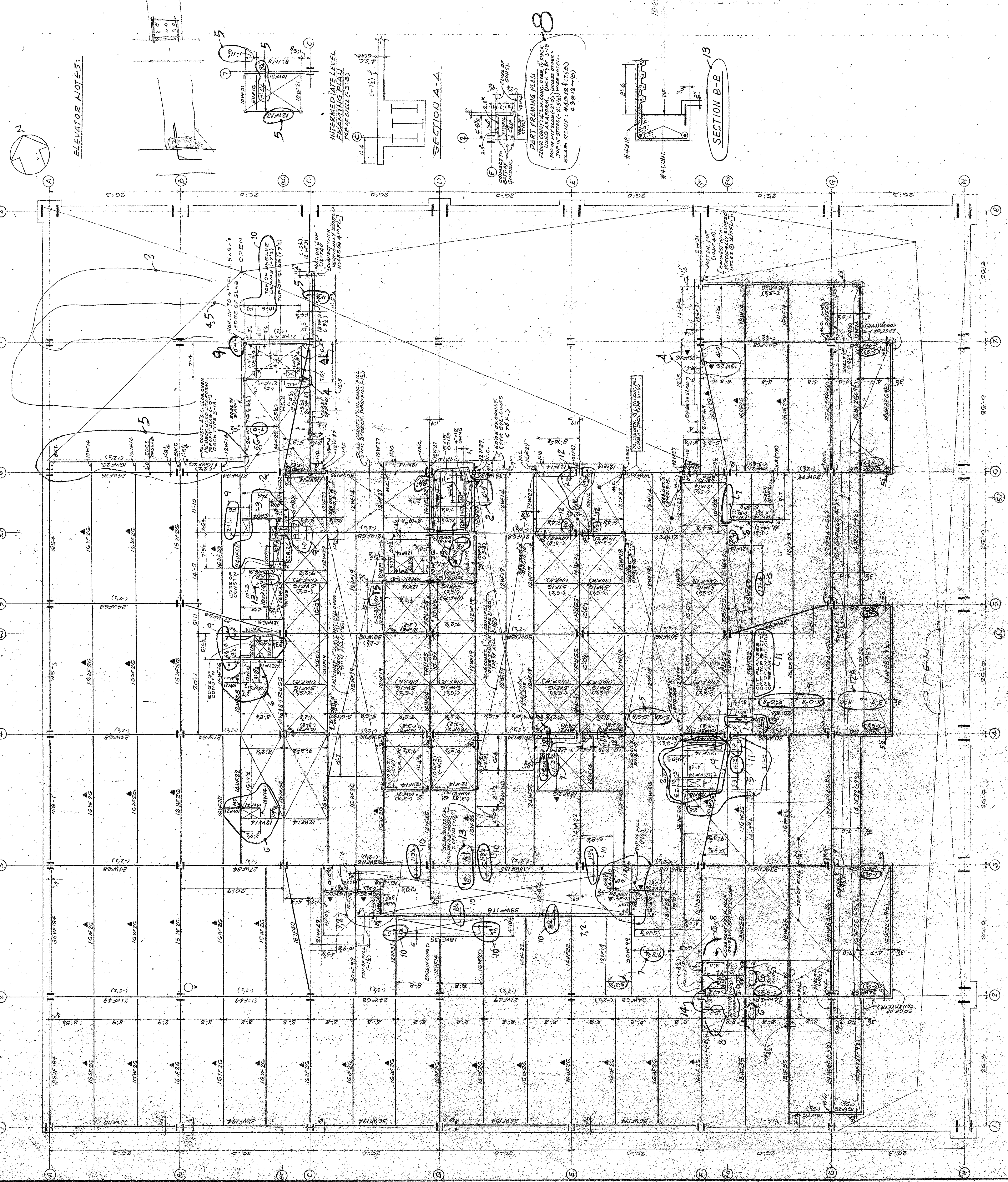


REVISIONS	
NO.	DESCRIPTION
1	REVISED AS CIRCLED
2	REVISED AS CIRCLED
3	REVISED AS CIRCLED
4	REVISED AS CIRCLED
5	REVISED AS CIRCLED
6	REVISED AS CIRCLED
7	REVISED AS CIRCLED
8	REVISED AS CIRCLED
9	REVISED AS CIRCLED
10	REVISED AS CIRCLED
11	REVISED AS CIRCLED
12	REVISED AS CIRCLED
13	REVISED AS CIRCLED
14	REVISED AS CIRCLED
15	REVISED AS CIRCLED

ELEVATOR NOTES:



12-571 REVISIONS FROM RELEASED FOR
 10-25-71 COLUMN TO COLUMN BEAMS
 DETAILING

**BANKERS TRUST
 PLAZA**

**A FISHER BROTHERS
 PROJECT**

GREENWICH AND LIBERTY ST. N. Y. N. Y.
 SHREVE, LAMB & HARMON ASSOCIATES P.C.
 ARCHITECTS
 475 PARK AVENUE SOUTH N. Y. N. Y. 10016
 PETERSON AND BRICKBAUER
 ASSOCIATED ARCHITECTS
 919 THIRD AVENUE N. Y. N. Y. 10022
 THE OFFICE OF JAMES RUDERMAN
 STRUCTURAL ENGINEERS
 515 MADISON AVENUE N. Y. N. Y. 10022
 J. A. ROSS, BAUM & BOLLES
 MECH. & ELEC. ENGINEERS
 345 PARK AVENUE N. Y. N. Y. 10022

NOTES:
 1. FLOOR CONCRETE BR. 2. IN CONG. FILL OVER
 2. TOP OF CONG. FILL (C-2)
 3. TOP OF STEEL (C-2) SEE DWG. 5-22.
 4. FOR DIMENSIONS SEE 5-21.
 5. (A) INDICATES BEAMS ARE A 576 GR-90 STEEL.

3 25 FLOOR FRAMING PLAN

PROJECT NUMBER
7101

DRAWING NUMBER
S-14

DATE

SCALE
