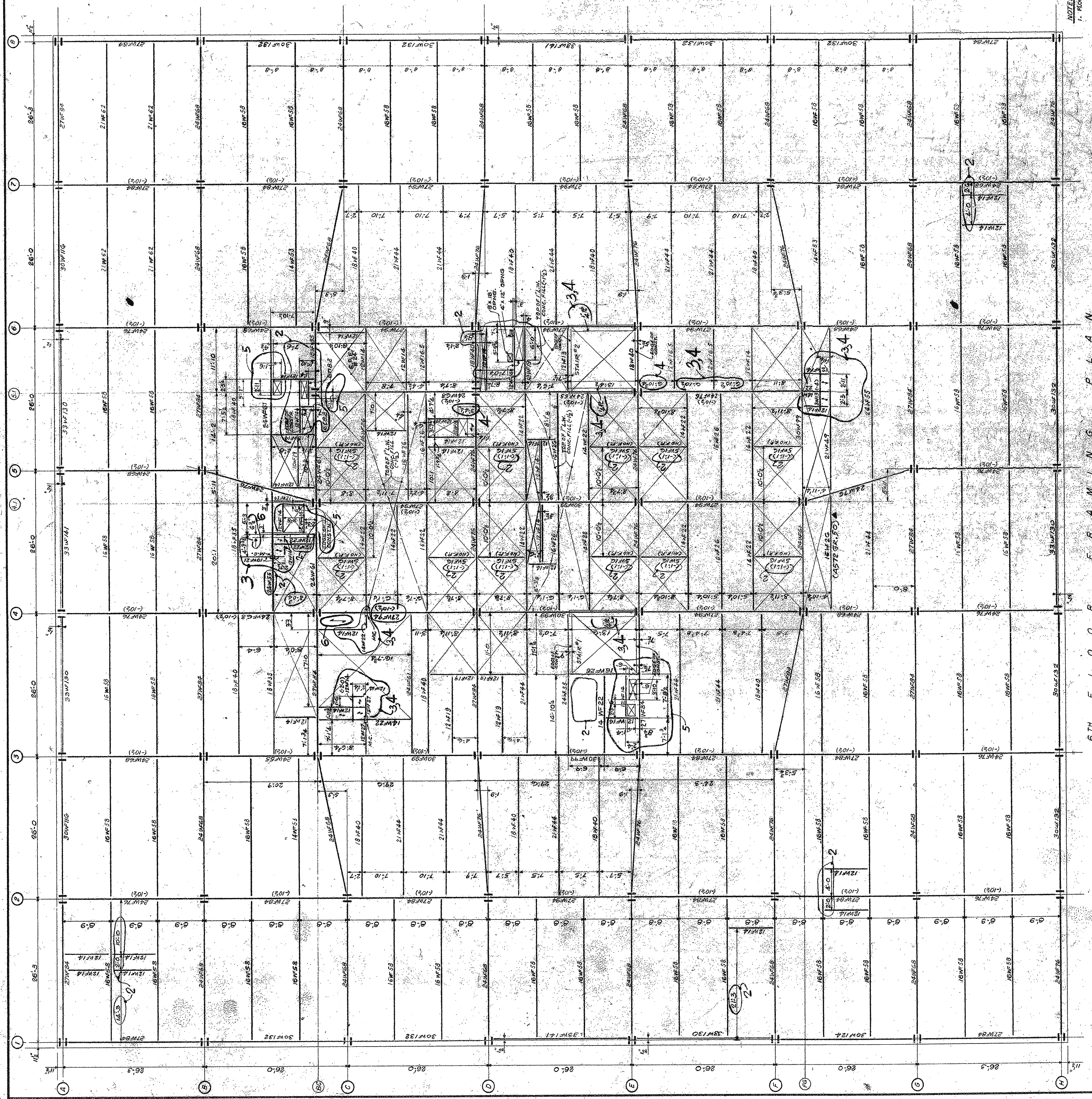
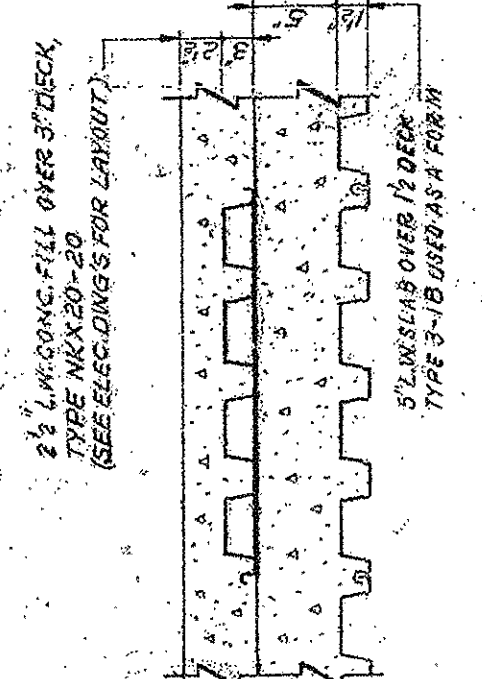


REVISIONS	
NO.	DESCRIPTION
1	7-5-71 REVISIONS PER 10-10-70
2	7-11-71 REVISIONS PER 10-10-70
3	8-21-71 REVISIONS PER 10-10-70
4	9-1-71 REVISIONS PER 10-10-70
5	9-1-71 REVISIONS PER 10-10-70
6	7-15-72 CHANGES TO FLOOR CONSTRUCTION



NOTES:  
 1. REVISIONS TO BE MADE IN THE FIELD.  
 2. TO BE DONE BY THE CONTRACTOR.  
 3. FOR THE BEAMS SEE DRAWING 5-10-71.  
 4. (A) JOISTS BEAMS ARE 21W12-50 STEEL.

11-5-71: REVISIONS PER 10-10-70 RELEASED FOR APPROVAL & 10-25-71: COLUMBIAN COLUMBIAN BEAMS RELEASED FOR ORDERING & DETAILING.

ISSUED TO: NO. DATE PKG. NO.  
**BANKERS TRUST PLAZA**

**A FISHER BROTHERS PROJECT**

GREENWICH AND LIBERTY ST. N.Y. N.Y.  
 SHREVE, LAMBA & HARRON ASSOCIATES P.C.  
 ARCHITECTS  
 425 PARK AVENUE SOUTH N.Y. N.Y. 10016  
**PETERSON AND BRICKBAUER ASSOCIATED ARCHITECTS**  
 919 THIRD AVENUE N.Y. N.Y. 10022  
 THE OFFICE OF JAMES RUDERMAN  
 STRUCTURAL ENGINEERS  
 335 MADISON AVENUE N.Y. N.Y. 10022  
 J. A. ROY, BAUM & BOLLES, MECHANICAL ENGINEERS  
 345 PARK AVENUE N.Y. N.Y. 10022

6" FLOOR FRAMING PLAN  
 PROJECT NUMBER 7101  
 DRAWING NUMBER 518  
 DATE SCALE

6 1/4" F L O O R F R A M I N G P L A N