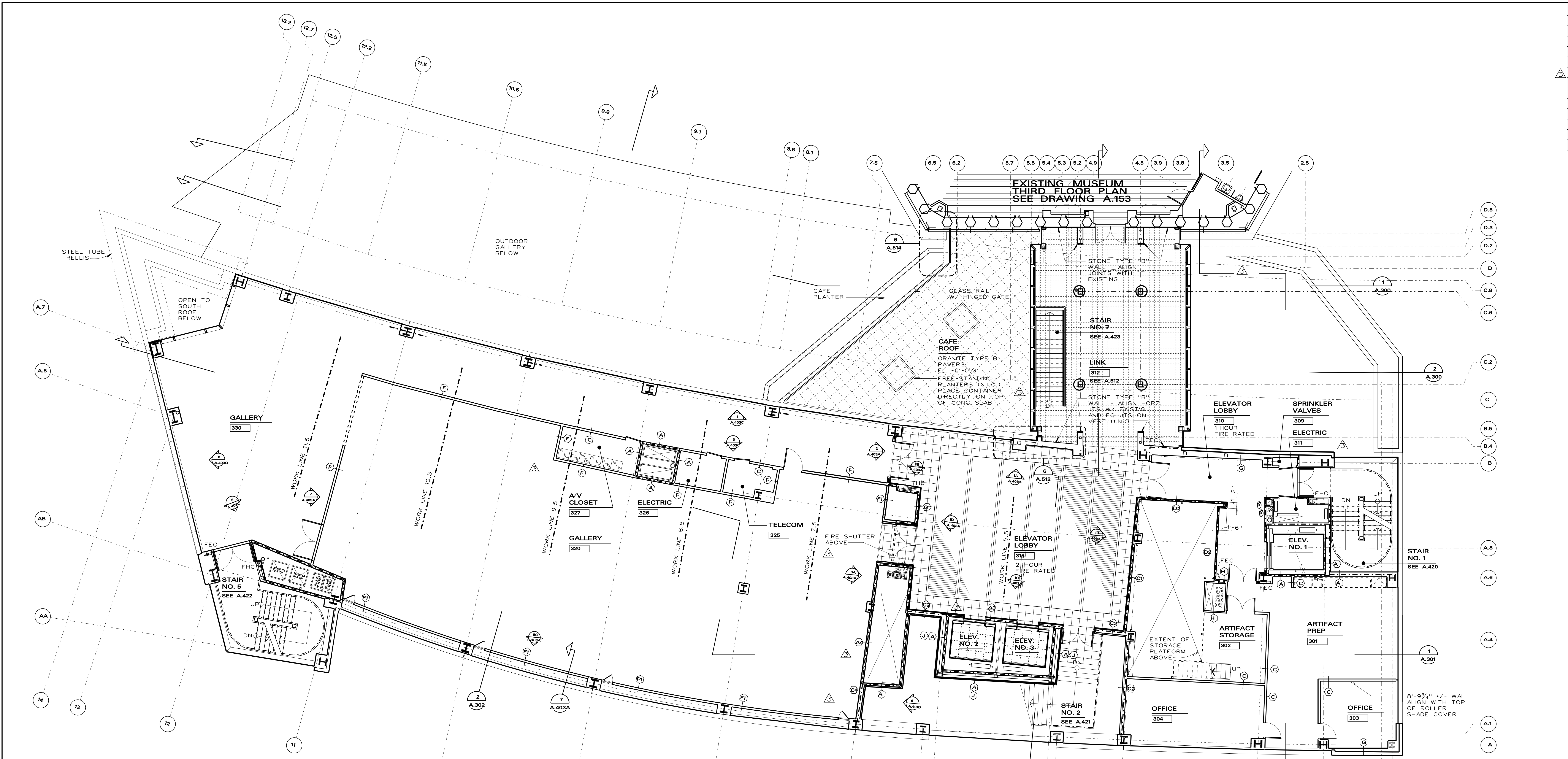


ISSUED TO	DATE
FNDN BIDS	28SEP01
STEEL BIDS	1 NOV01
CM/ GC	1 NOV01
BLDG DEPT	17DEC01
BPCA	1 FEB02
CM ADDM No. 3	1 MAR02
BULLETIN No. 5	04 JUN02
BPCA	5 SEP02
BULLETIN No. 6	2 OCT02
BULLETIN No. 7	18 DEC02
BULLETIN No. 9	13 JUN03
BLDG. DEPT.	12 JUN03
BULLETIN No. 20	14 NOV03



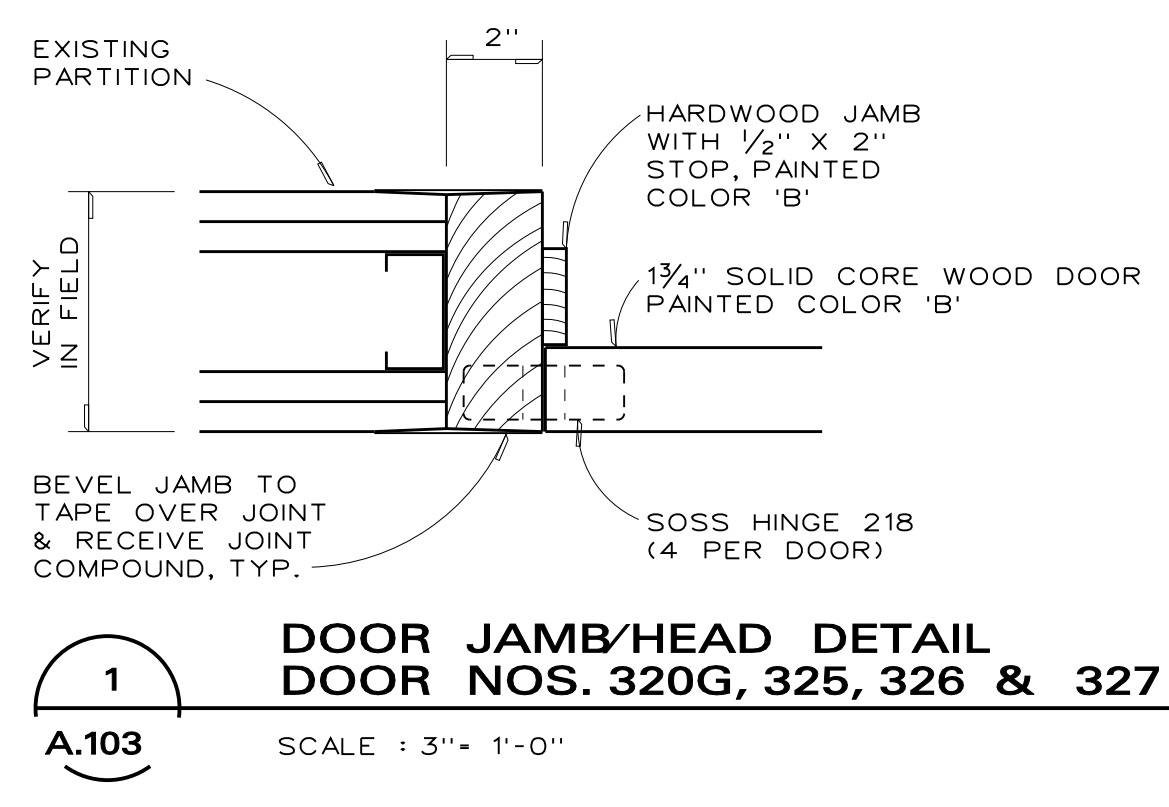
NOTE 1 - DOOR AND HARDWARE REVISION
 GENERAL:
 REMOVE DOORS AND FRAMES AND REPLACE WITH SOLID CORE WOOD DOORS AND FRAMES SET FLUSH WITH PARTITION, TAPE AND COMPOUND FRAME TO GYPSUM BOARD PARTITION.

HARDWARE:
 DOOR 320G - GALLERY 330 FROM GALLERY 320
 4 HINGES - REPLACE CB199 5 X 4 1/2 US 32 D WITH SOSS 218 HINGES
 1 EXIT DEVICE - MODIFY 9875 X 992L-M TO 9875EC (NO EXTERIOR TRIM)
 1 CLOSER - REINSTALL EXISTING CLOSER

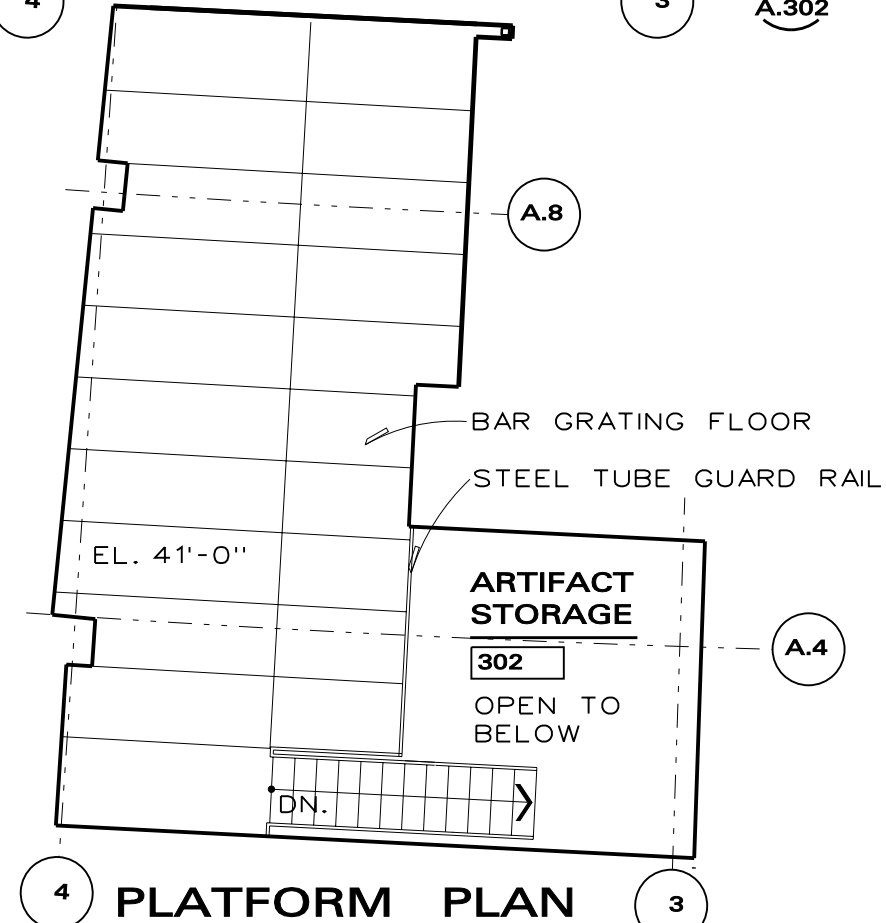
DOOR 325 - GALLERY 330 FROM TELECOM 325
 4 HINGES - REPLACE CB199 5 X 4 1/2 US 32 D WITH SOSS 218 HINGES
 1 CLOSER - REINSTALL EXISTING CLOSER
 1 LOCKSET - REINSTALL LOCKSET L9080L O1A WITH LEVER ON INTERIOR ONLY (NO EXTERIOR TRIM).
 1 EDGE PULL - INSTALL NEW TRIMCO/BBN 1062 EDGE PULL
 1 REINSTALL DOOR CONTACT AND ADD RX SENSOR ABOVE DOOR ON INTERIOR OF CLOSET.

DOOR 326 - GALLERY 330 FROM ELECTRIC 326
 4 HINGES - REPLACE CB199 5 X 4 1/2 US 32 D WITH SOSS 218 HINGES
 1 CLOSER - REINSTALL EXISTING CLOSER
 1 LOCKSET - REINSTALL LOCKSET L9080L O1A WITH LEVER ON INTERIOR OF DOOR ONLY (NO EXTERIOR TRIM).
 1 EDGE PULL - INSTALL NEW TRIMCO/BBN 1062 EDGE PULL

DOOR 327 - GALLERY 330 FROM A/V CLOSET 327
 4 HINGES - REPLACE CB199 5 X 4 1/2 US 32 D WITH SOSS 218 HINGES
 1 CLOSER - REINSTALL EXISTING CLOSER
 1 LOCKSET - REINSTALL LOCKSET L9080L O1A WITH LEVER ON INTERIOR OF DOOR ONLY (NO EXTERIOR TRIM).
 1 EDGE PULL - INSTALL NEW TRIMCO/BBN 1062 EDGE PULL



DOOR JAMB/HEAD DETAIL
DOOR NOS. 320G, 325, 326 & 327
 A.103 SCALE: 1/8" = 1'-0"



PLATFORM PLAN

REFERENCE DRAWINGS:
 A.410 THEATER
 A.420 STAIRS
 A.430 ELEVATORS
 A.440 TOILETS

LEGEND

⊗ WALL TYPES

DOOR NUMBER

EL. X'-X" THIRD FLOOR DATUM ELEVATION 33'-6" TO MATCH EXISTING BUILDING THIRD FLOOR-- EQUIVALENT SURVEY ELEVATION 43'-2 1/2" VARIATIONS ARE GIVEN RELATIVE TO FLOOR DATUM

--- FIRE RATED WALL (SEE WALL TYPE)

⊕ WATER FOUNTAIN

DOOR & HARDWARE SCHEDULE																					
DOOR NUMBER	OPENING SIZE	FIRE RATING	GLASS TYPE	FRAME TYPE	JAMB/STILE	MITG STILE HEAD	SILL	BUTTS	CLOSER	LOCKSET/LATCH/SET	DEADLOCK	EXIT DEVICE	RECEIVED DEVICE	FLUSH BOLTS	COORDINATOR	PULLS	PUSH-PLATE	DOOR SEALS	THRESHOLD	REMARKS	DOOR NUMBER
301	5'-6" X 7'-10 3/4"	3/4	2A	1	4	M2	4	1	A/EL	A1/EL	L9070										301
302	5'-6" X 7'-10 3/4"	1A	1	4	M2	4	1	A/EL	A1/EL	L9080EU											302
303	3'-0" X 7'-10 3/4"	1A	1	4	4	1	A	A1	L9070												303
304	3'-0" X 7'-10 3/4"	1A	1	4	4	1	A	A1	L9070												304
309	3'-6" X 7'-10 3/4"	3/4	1A	1	4	4	1	A	A1	L9080			B&C	DC/EL					PROVIDE 1/4" X 1/2" ANGLE WATER TIGHT CURB		309
310	7'-0" X 7'-10 3/4"	1/2	2A	B	7	M1	7	1	A/EL	A1/EL	L9080								7'-0" X 2'-9" TRANSOM		310
310A	5'-6" X 7'-10 3/4"	1/2	2A	1	4	M1	4	1	A/EL	A1/EL	L9080EU			B&C	DC/EL				* SEE DET. 4/A.425		310A
311	3'-6" X 7'-10 3/4"	3/4	2A	1	4	4	1	A	A1	L9080											311
312	6'-0" X 6'-6"	1/2	2A	SEE A.551				1	A/EL	D1/EL									SEE STYLE DET. M1		312
315	6'-0" X 7'-10 3/4"	1/2	2A	B	7	M1	7	1	A/EL	A1/EL									SEE DETAIL 7/A.403C		315
315A	3'-2 1/2" X 8'-0"	1C	SEE A.515																8'-0" X 2'-9" TRANSOM		315A
320	7'-0" X 7'-10 3/4"	1/2	2A	4	4A	M1	4A	1	A/EL	D1/EL									SEE DETAIL 7/A.403C		320
320A	7'-4" X 7'-10 3/4"	2A	1	4	M1	4	1	A/EL	D1/EL										7'-0" X 2'-9" TRANSOM		320A
320B	7'-8 3/4" X 8'-0 3/4"	2C	SEE A.403A																SKETCH-FACE, SEE DETAILS		320B
320C-F	2'-0" X 6'-6"	1C	SEE A.403A					1	A										PATCH-FACE, SEE DETAILS		320C-F
320G	3'-8" X 7'-10 3/4"	SEE DETAIL 1/A.103																	SEE A.403C FOR ELEVATION		320G
325	3'-0" X 7'-10 3/4"	SEE DETAIL 1/A.103																	SEE A.403C FOR ELEVATION		325
326	3'-0" X 7'-10 3/4"	SEE DETAIL 1/A.103																	SEE A.403C FOR ELEVATION		326
327	7'-4" X 7'-10 3/4"	SEE DETAIL 1/A.103																	SEE A.403C FOR ELEVATION		327
330	7'-4" X 7'-10 3/4"	1/2	2A	1	4	M1	4	1	A/EL	A1/EL									* SEE DET. 4/A.425		330

ROOM FINISH SCHEDULE									
ROOM No.	NAME	FLOOR	BASE	WALLS	CEILING	CEILING HEIGHT	REMARKS	DOOR NUMBER	
301	ARTIFACT PREPARATION	CONC SEALER K	RESILIENT	PTD GYP BOARD	EXPOSED CONST	---			
302	ARTIFACT STORAGE	CONC SEALER K	RESILIENT	PTD GYP BOARD	EXPOSED CONST	---			
303	OFFICE	CONC SEALER K	RESILIENT	PTD GYP BOARD	EXPOSED CONST	---			
304	OFFICE	CONC SEALER K	RESILIENT	PTD GYP BOARD	EXPOSED CONST	---			
309	SPRINKLER VALVE CLOSET	DECK COATING	DECK COATING	PTD GYP BOARD	EXPOSED CONST	---	EXTEND DECK COATING 4" UP WALLS ALL AROUND		
310	ELEVATOR LOBBY	VCT	RESILIENT	PTD GYP BOARD	EXPOSED CONST	10'-0"			
311	ELECTRIC	VCT	RESILIENT	PTD GYP BOARD	EXPOSED CONST	9'-0"			
327	LINK/ STAIRS	PORCELAIN TILE	PTD METAL	GLASS	PTD GYP BOARD	9'-0"	* PROVIDE PRICE FOR GRANITE TILE ALTERNATE		
315	ELEVATOR LOBBY	WOOD	STONE TYPE B	WOOD	ACOUSTIC WOOD CEILING	10'-9"			
320	GALLERY	CONCRETE FUTURE FINISH N.L.C	PTD GYP BOARD	PTD GYP BOARD	EXPOSED CONST	---			
325	TELECOM	VCT	RESILIENT	PTD GYP BOARD	EXPOSED CONST	9'-0"			
326	ELECTRIC	VCT	RESILIENT	PTD GYP BOARD	EXPOSED CONST	9'-0"			
327	A/V CLOSET	VCT	RESILIENT	PTD GYP BOARD	EXPOSED CONST	9'-0"			
330	GALLERY	CARPET SEE DWG. C.103	RESILIENT	PTD GYP BOARD	WOOD CUBE	VARIES	SEE DWG. A.403C		
	STAIR NO. 1	RUBBER		GLASS PTD GYP BOARD	VARIES	SEE DWG. A.420			
	STAIR NO. 2	STONE		GLASS PTD GYP BOARD	VARIES	SEE DWG. A.421			
	STAIR NO. 5	RUBBER		GLASS PTD GYP BOARD	VARIES	SEE DWG. A.422			
	STAIR NO. 7	RUBBER		GLASS PTD GYP BOARD	VARIES	SEE DWG. A.423			

THIRD FLOOR PLAN

2" = 8'
 0 4'

SCALE: 1/8" = 1'-0"

A.103

DATE: 05 FEB 03
 PROJECT NUMBER: 9809
 SHEET NUMBER:

KEVIN ROCHE JOHN DINKELLO AND ASSOCIATES
 ARCHITECTS
 HAMDEN, CONNECTICUT
 A LIVING MEMORIAL TO THE HOLOCAUST
 MUSEUM OF JEWISH HERITAGE
 THE EAST WING
 HUGH L. CAREY BATTERY PARK CITY
 NEW YORK, NEW YORK